

With SUNTECH's Smart Technology

SUNTECH

**CUSTOMER ORIENTED GLOBAL TOP QUALITY
SUNTECH SEWING MACHINE.**



SUNTECH

**We will provide
high-quality service
to our customers**





Business Instruction

With the pride of being a single sewing machine brand in Korea,
We do our best to innovate technology that is worth co-prosperity.



Sewing
Machine

...



A/S & Spare
parts

...



Automation
Device

...



IoT System
& Device

CEO Message

Customer oriented global top quality sewing machine.

How are you?

We always appreciate your interests
and support in SunTech Brand.

Since our first start in manufacturing
and selling sewing machines in 1982,
the company has been constantly researching
and developing products that incorporate the
technology needed at the site.

Through the development of field-oriented
technology that puts t hese footprint in 'SunTechism'
and always fin d answers in the field, SunTech brand
will be chosen with trust as a process improvement
sewing machine maker.

In a rapidly changing market environment,
SunTech promises to c ontinue to move forward
constantly to create differentiated competitiveness
to create new value and change-driven technology
development capabilities through innovative thinking,
and to become a key palyer in opening a new era
based on the management guidelines of creating
customer-centered value.

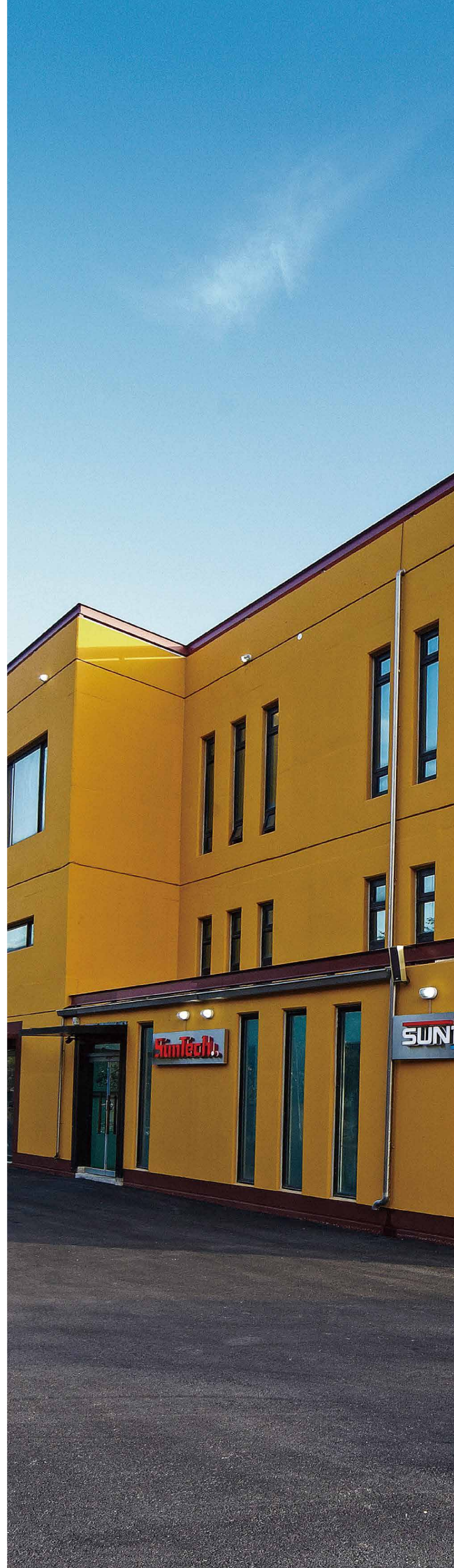
We will do our best to innovate the technology
to impress our customers with the pride of being
Korea's only one sewing machine brand in the world
under the value of co-prosperity.

We look forward to your continued participation,
interest and w arm support.

Thank you very much!



Nam, Y.S.
CEO. SunTech Co.,Ltd



SunTech



DELIVERY

Follow delivery date principles within 45 days of ordering



R&D

Efforts to continue research and product development



QUALITY

More than 30 years of know-how, customized products, and 365 days of one-stop service



COST

A reasonable price for market and customer consideration

SUNTECH SMART FACTORY

■ SUNTECH IoT SYSTEM

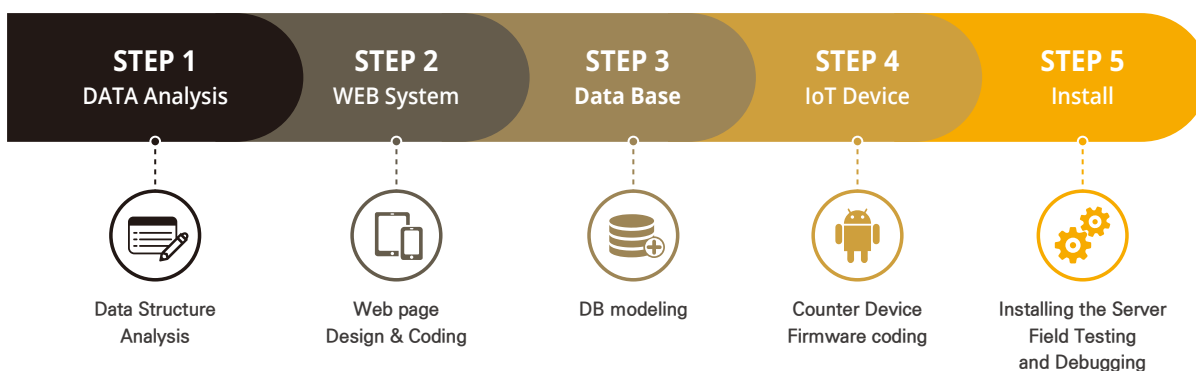


OEE

(Overall Equipment Effectiveness)

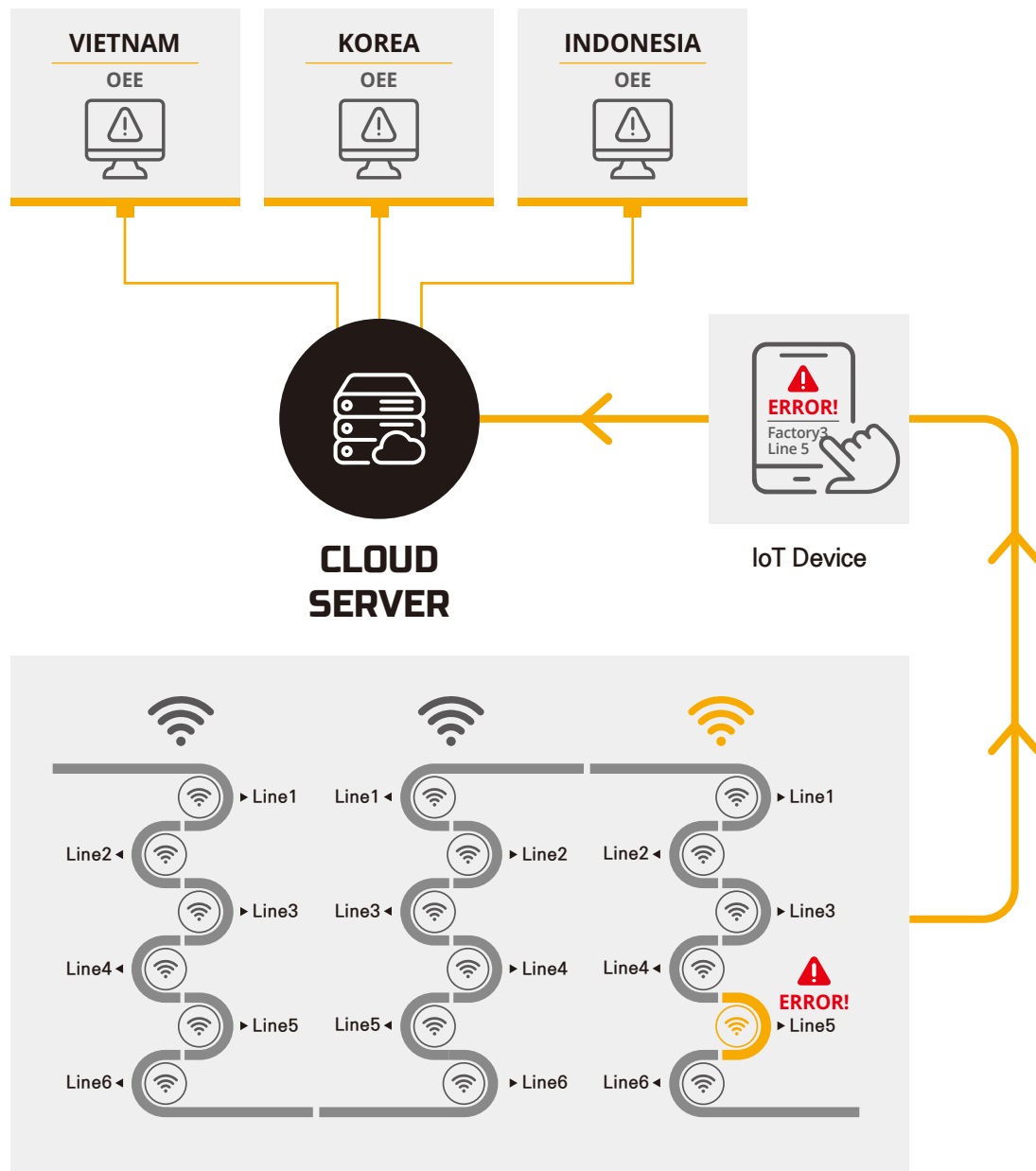


■ Development Process of Customized IoT System



MAKING AUTOMATION FACTORY

■ Manufacturing Process Monitoring System



SUNTECH

ASIA NETWORK

■ Build A/S networks through Asian networks



KOREA

HQ

85, Goha-gil, Eonyang-eup, Ulju-gun,
Ulsan, Republic of Korea

TEL +82-55-352-9304

R&D CENTER / FACTORY

394-5, Sanoe-ro, Sanoe-myeon,
Miryang-si, Gyeongsangnam-do,
Republic of Korea

TEL +82-55-352-9304

TRADING CENTER

20-1, Jaseonggongwon-ro, Donggu,
Busan, Republic of Korea

TEL +82-51-632-9304

INDONESIA

CIKARANG OFFICE

Ruko Podium Blok A No.1&2 JL. Mataram
Lippo Cikarang Kel. Cibatu Kec. Cikarang
Selatan, Bekasi 17550, Indonesia

TEL +62-21-2210-4936-7

H.P +62-811-911-2248

H.P +62-811-911-2284 (Local)

JEPARA OFFICE

JL. Jepara - Kudus Desa Rengging RT.006
RW.001 Pecangaan Jepara, Indonesia.

TEL +62-291-752-0288

H.P +62-811-179-2248

REMBANG OFFICE

JL. Panglima Sudirman No.158-6
RT.002 RW.03, Kabonganlor, Rembang,
Jawa Tengah, Indonesia.

TEL +62-295-698-3799

VIETNAM

HANOI OFFICE

So 76-LK 6B, Lang Viet Kieu Ch au Au,
Phuong Mo Lao, Quan Ha dong,
Thanh pho HaNoi, Vietnam.

TEL +84-24-3991-9222

H.P +84-91-494-8802

HOCHIMINH OFFICE

53 lo N, Hoang Quoc Viet Noi Dai, Khu
dan cu Phu My, Phuong Phu My, Quan 7,
Thanh pho Ho Chi Minh, Vietnam.

TEL +84-28-6682-8877

H.P +84-97-932-8610

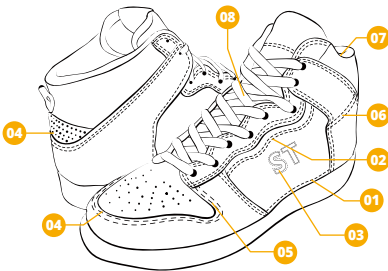
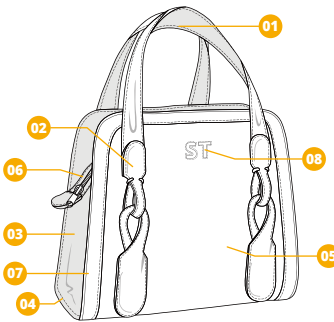
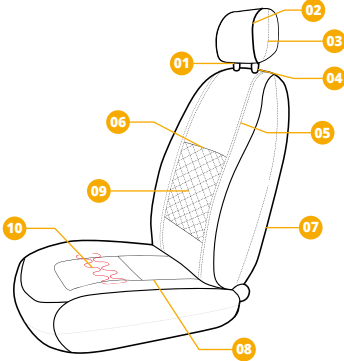
<http://www.suntech.asia>

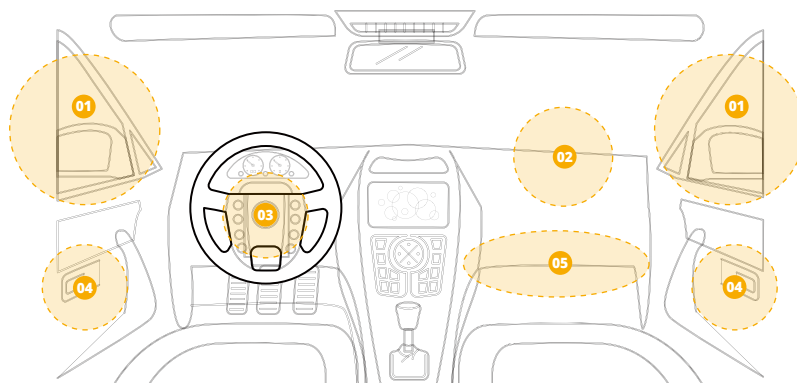
E-mail: suntech@suntech.asia



APPLICATIONS

■ Supply of systems incorporating Suntech's technology

Shose	Bag	Car Seat
 <ul style="list-style-type: none"> 01. Side Deco stitch 02. Side Decorative Double stitch 03. Logo Attaching 04. Toe Cap / Heel Top Stitch 05. Vamp Attaching 06. Back Reinforcement Attaching 07. Back Heel Lining Attaching 08. Tongue Attaching 	 <ul style="list-style-type: none"> 01. Strap Sewing 02. Buckle Strap 03. Side/Bottom Joint Sewing 04. Bottom Board Attaching 05. Inner Side Attaching 06. Zipper Attaching 07. Edge Piping 08. Decorative Pattern Stitching 	 <ul style="list-style-type: none"> 01. Velcro Attaching 02. Outline Taping 03. Head Rest Joint Sewing 04. Hemming 05. Seam Busting 06. Edge Joint Sewing 07. Back Rest Joint Sewing 08. Cushion Joint Sewing 09. Decorative Pattern Stitching 10. Heat Wire Coiling



Air Bags

- 01. Side curtain airbags
- 02. Front passenger-side airbag
- 03. Driver-side airbag
- 04. Side impact airbags
- 05. Knee airbag

SEWING MACHINE

CONTENTS

■ SUNTECH PRODUCT LIST

Category	Model Name	Description of Goods	Page
Pattern Sewing Machine	ST-1010HS	ELECTRONICALLY CONTROLLED, PATTERN SEWING MACHINE. (100mm X 100mm)	12
	ST-1010HS-20	ELECTRONICALLY CONTROLLED, PATTERN SEWING MACHINE. (100mm X 100mm) – Removable Side	
	ST-1010HS-25	ELECTRONICALLY CONTROLLED, PATTERN SEWING MACHINE. (100mm X 100mm) – Removable Reverse	
	ST-1010HS-3D	ELECTRONICALLY CONTROLLED, PATTERN SEWING MACHINE. (100mm X 100mm) – 3D Sewing	
	ST-1510HS	ELECTRONICALLY CONTROLLED, PATTERN SEWING MACHINE. (150mm X 100mm)	13
	ST-1510HS-20	ELECTRONICALLY CONTROLLED, PATTERN SEWING MACHINE. (150mm X 100mm) – Removable Side	
	ST-1510HS-25	ELECTRONICALLY CONTROLLED, PATTERN SEWING MACHINE. (150mm X 100mm) – Removable Reverse	
	ST-1510HS-3D	ELECTRONICALLY CONTROLLED, PATTERN SEWING MACHINE. (150mm X 100mm) – 3D Sewing	
	ST-2210HS	ELECTRONICALLY CONTROLLED, PATTERN SEWING MACHINE. (220mm X 100mm)	14
	ST-2210HS-20	ELECTRONICALLY CONTROLLED, PATTERN SEWING MACHINE. (220mm X 100mm) – Removable Side	
	ST-2210HS-25	ELECTRONICALLY CONTROLLED, PATTERN SEWING MACHINE. (220mm X 100mm) – Removable Reverse	
	ST-2210HS-30	ELECTRONICALLY CONTROLLED, PATTERN SEWING MACHINE. (220mm X 100mm) – with SHOELACE LOOP DEVICE for TONGUE	15
	ST-2210HS-3D	ELECTRONICALLY CONTROLLED, 3D PATTERN SEWING MACHINE. (220mm X 100mm)	16
	ST-3020HS	ELECTRONICALLY CONTROLLED, PATTERN SEWING MACHINE. (300mm X 200mm)	17
	ST-3020HS-20	ELECTRONICALLY CONTROLLED, PATTERN SEWING MACHINE. (300mm X 200mm) – Removable Side	
	ST-3020HS-25	ELECTRONICALLY CONTROLLED, PATTERN SEWING MACHINE. (300mm X 200mm) – Removable Reverse	
	ST-3020HS-3D	ELECTRONICALLY CONTROLLED, 3D PATTERN SEWING MACHINE. (300mm X 200mm)	18
	ST-3020HS-P	ELECTRONICALLY CONTROLLED, PATTERN PUNCHING & SEWING MACHINE (300mm x 200mm)	19
	ST-3020HS-3-Turntable	ELECTRONICALLY CONTROLLED, PATTERN SEWING MACHINE. (300mm x 200mm) – with 3-TURNABLE	20
	ST-3020HS-4-Turntable	ELECTRONICALLY CONTROLLED, PATTERN SEWING MACHINE. (300mm x 200mm) – with 4-TURNABLE	
	ST-3020HS-5P	ELECTRONICALLY CONTROLLED, PATTERN SEWING MACHINE. (300mm x 200mm) – with AUTO 5-PALLET FEEDING SYSTEM	21
	ST-3020HS-50	ELECTRONICALLY CONTROLLED, PATTERN SEWING MACHINE. (300mm x 200mm) – with SHOELACE LOOP DEVICE	22
	ST-3020HS-C2	ELECTRONICALLY CONTROLLED, PATTERN SEWING MACHINE. (300mm x 200mm) – MULTI NEEDLE (2-COLOR CHANGE)	23
	ST-3020HS-C3	ELECTRONICALLY CONTROLLED, PATTERN SEWING MACHINE. (300mm x 200mm) – MULTI NEEDLE (3-COLOR CHANGE)	
	ST-3020HS-6S	ELECTRONICALLY CONTROLLED, PATTERN SEWING MACHINE. (300mm x 200mm) – with AUTOMATIC 3-STRAP SYSTEM	24
	ST-6040HS	ELECTRONICALLY CONTROLLED, PATTERN SEWING MACHINE. (600mm x 400mm)	25
	ST-6040HS-C2	ELECTRONICALLY CONTROLLED, PATTERN SEWING MACHINE. (600mm x 400mm) – MULTI NEEDLE (2-COLOR CHANGE)	26
	ST-6040HS-C3	ELECTRONICALLY CONTROLLED, PATTERN SEWING MACHINE. (600mm x 400mm) – MULTI NEEDLE (3-COLOR CHANGE)	
	ST-430D	ELECTRONICALLY CONTROLLED, BARTACK SEWING MACHINE	27
	CR-3020	ELECTRONICALLY CONTROLLED, PATTERN PUNCHING MACHINE (300mm x 200mm)	28
Post bed Sewing Machine	ST-666H	DIRECT DRIVE POST BED 1-NEEDLE ROLLER FEED LOCK STITCH ELECTRONIC PROGRAMMABLE SEWING MACHINE with AUTOMATIC THREAD TRIMMER	29
	ST-777H	DIRECT DRIVE POST BED 2-NEEDLE ROLLER FEED LOCK STITCH ELECTRONIC PROGRAMMABLE SEWING MACHINE with AUTOMATIC THREAD TRIMMER	30
	ST-857	POST BED 1-NEEDLE NEEDLE FEED LOCK STITCH SEWING MACHINE	31
	ST-857-7	POST BED 1-NEEDLE NEEDLE FEED LOCK STITCH SEWING MACHINE with AUTOMATIC THREAD TRIMMER	
	ST-867	POST BED 2-NEEDLE NEEDLE FEED, LOCK STITCH SEWING MACHINE	32
	ST-867-7	POST BED 2-NEEDLE NEEDLE FEED, LOCK STITCH SEWING MACHINE with AUTOMATIC THREAD TRIMMER	
	ST-957BN	DIRECT DRIVE POST BED ROLLER FEED 1-NEEDLE LOCK STITCH SEWING MACHINE	33
	ST-957-7LS	DIRECT DRIVE POST BED ROLLER FEED 1-NEEDLE LOCK STITCH SEWING MACHINE with AUTOMATIC THREAD TRIMMER	
	ST-957-8LS	DIRECT DRIVE POST BED ROLLER FEED 1-NEEDLE LOCK STITCH SEWING MACHINE with AUTOMATIC THREAD TRIMMER of EXTREME RESIDUAL THREAD	34
	ST-957-8AS	DIRECT DRIVE POST BED ROLLER FEED 1-NEEDLE LOCK STITCH SEWING MACHINE with AUTOMATIC THREAD TRIMMER of EXTREME RESIDUAL THREAD	35
	ST-957SRB	DIRECT DRIVE SMALL POST BED ROLLER FEED 1-NEEDLE LOCK STITCH SEWING MACHINE	36
	ST-957SRB-R	DIRECT DRIVE SMALL POST BED ROLLER FEED 1-NEEDLE LOCK STITCH SEWING MACHINE on Left-Side Hook	
	ST-957SRB-L	DIRECT DRIVE SMALL POST BED ROLLER FEED 1-NEEDLE LOCK STITCH SEWING MACHINE on Right-Side Hook	
	ST-957SRB-7	DIRECT DRIVE SMALL POST BED ROLLER FEED 1-NEEDLE SEWING MACHINE with AUTOMATIC THREAD TRIMMER	37
	ST-967SRB	DIRECT DRIVE SMALL POST BED ROLLER FEED 2-NEEDLE LOCK STITCH SEWING MACHINE	38
	ST-967BN	DIRECT DRIVE POST BED 2-NEEDLE ROLLER FEED LOCK STITCH SEWING MACHINE	39
	ST-967-7LS	DIRECT DRIVE POST BED 2-NEEDLE ROLLER FEED LOCK STITCH SEWING MACHINE with AUTOMATIC THREAD TRIMMER	
General Sewing Machine	ST-2510A	DIRECT DRIVE FLAT BED 1-NEEDLE SEWING MACHINE (for Thin Material)	40
	ST-2510B	DIRECT DRIVE FLAT BED 1-NEEDLE SEWING MACHINE (for Heavy Material)	
	ST-2520A	DIRECT DRIVE FLAT BED 1-NEEDLE SEWING MACHINE with AUTOMATIC THREAD TRIMMER (for Thin Material)	
	ST-2520A-7	DIRECT DRIVE FLAT BED 1-NEEDLE SEWING MACHINE with AUTOMATIC THREAD TRIMMER of EXTREME RESIDUAL THREAD (for Thin Material)	
	ST-2520B	DIRECT DRIVE FLAT BED 1-NEEDLE SEWING MACHINE with AUTOMATIC THREAD TRIMMER (for Heavy Material/Con.Box assembled)	
	ST-2520BS	DIRECT DRIVE FLAT BED 1-NEEDLE SEWING MACHINE with AUTOMATIC THREAD TRIMMER (for Heavy Material/Con.Box built-up)	

Category	Model Name	Description of Goods	Page
General Sewing Machine	ST-250BL-D	DIRECT DRIVE FLAT BED 1-NEEDLE LARGE HOOK LOCK STITCH SEWING MACHINE	41
	ST-250BL-7	DIRECT DRIVE FLAT BED 1-NEEDLE LARGE HOOK LOCK STITCH SEWING MACHINE with AUTOMATIC THREAD TRIMMER	
	ST-506-D	DIRECT DRIVE FLAT BED 1-NEEDLE LOCK STITCH SEWING MACHINE with VERTICAL EDGE TRIMMER	42
	ST-380	CYLINDER BED 1-NEEDLE UNISON FEED LOCK STITCH SEWING MACHINE	43
	ST-380BL	CYLINDER BED 1-NEEDLE UNISON FEED LOCK STITCH SEWING MACHINE - Large Hook	
	ST-380BLB	CYLINDER BED 1-NEEDLE UNISON FEED LOCK STITCH SEWING MACHINE - Large Hook & Binder	
	ST-560	FLAT BED 1-NEEDLE UNISON FEED LOCK STITCH SEWING MACHINE	44
	ST-560-7	FLAT BED 1-NEEDLE UNISON FEED LOCK STITCH SEWING MACHINE with AUTOMATIC THREAD TRIMMER	
	ST-572	FLAT BED 2-NEEDLE UNISON FEED LOCK STITCH SEWING MACHINE	
	ST-562-7	FLAT BED 2-NEEDLE UNISON FEED LOCK STITCH SEWING MACHINE with AUTOMATIC THREAD TRIMMER	45
	ST-340BL-7	FLAT BED 1-NEEDLE UPPER & LOWER FEED LOCK STITCH SEWING MACHINE with AUTOMATIC THREAD TRIMMER	
	ST-640BL	LONG ARM TYPE FLAT BED 1-NEEDLE UPPER & LOWER FEED LOCK STITCH SEWING MACHINE	46
	ST-640BL-7	LONG ARM TYPE FLAT BED 1-NEEDLE UPPER & LOWER FEED LOCK STITCH SEWING MACHINE with AUTOMATIC THREAD TRIMMER	
	ST-757	FLAT BED 2-NEEDLE NEEDLE FEED LOCK STITCH SEWING MACHINE	47
	ST-757-7	FLAT BED 2-NEEDLE NEEDLE FEED LOCK STITCH SEWING MACHINE with AUTOMATIC THREAD TRIMMER	
	ST-797BLD	FLAT BED 2-NEEDLE SPLIT NEEDLE BAR NEEDLE FEED LARGE HOOK LOCK STITCH SEWING MACHINE	48
	ST-797BLD-7	FLAT BED 2-NEEDLE SPLIT NEEDLE BAR NEEDLE FEED LARGE HOOK LOCK STITCH SEWING MACHINE with AUTOMATIC THREAD TRIMMER	
Zigzag Sewing Machine	ST-1452/3	POST BED 1-NEEDLE LARGE HOOK ZIGZAG LOCK STITCH SEWING MACHINE (2/3 POINT)	49
	ST-1452D	DIRECT DRIVE POST BED 1-NEEDLE LARGE HOOK ZIGZAG LOCK STITCH SEWING MACHINE (2 POINT)	
	ST-1530L-DZ	DIRECT DRIVE FLAT BED 1-NEEDLE ZIGZAG SEWING MACHINE (2-point)	50
	ST-1530LDZ-7	DIRECT DRIVE FLAT BED 1-NEEDLE ZIGZAG SEWING MACHINE with AUTOMATIC THREAD TRIMMER (2-POINT)	
	ST-1533L-DZ	DIRECT DRIVE FLAT BED 1-NEEDLE ZIGZAG SEWING MACHINE (3-point)	
	ST-1535	FLAT BED 1-NEEDLE UPPER & LOWER FEED ZIGZAG SEWING MACHINE (2-POINT)	51
	ST-1530P-7	ELECTRONICALLY CONTROLLED FLAT BED 1-NEEDLE ZIGZAG LOCK STITCH SEWING MACHINE with AUTOMATIC THREAD TRIMMER	
	ST-1450	DIRECT DRIVE FLAT BED 1-NEEDLE ZIGZAG SEWING MACHINE with AUTOMATIC THREAD TRIMMER	52
	ST-2150M	CYLINDER BED 1-NEEDLE UPPER & LOWER FEED ZIGZAG LOCK STITCH SEWING MACHINE	53
	ST-2150DZ	DIRECT DRIVE CYLINDER BED 1-NEEDLE UPPER & LOWER FEED ZIGZAG LOCK STITCH SEWING MACHINE (2-POINT)	54
	ST-2530DZ	DIRECT DRIVE FLAT BED 1-NEEDLE UPPER & LOWER FEED ZIGZAG LOCK STITCH SEWING MACHINE (2-POINT)	
Chain Stitch Sewing Machine	ST-6800D-3	HIGH SPEED DIRECT DRIVE 1-NEEDLE 3-THREAD OVERLOCK CHAIN STITCH SEWING MACHINE	55
	ST-6800D-4	HIGH SPEED DIRECT DRIVE 2-NEEDLE 4-THREAD OVERLOCK CHAIN STITCH SEWING MACHINE	
	ST-6800D-5	HIGH SPEED DIRECT DRIVE 2-NEEDLE 5-THREAD OVERLOCK CHAIN STITCH SEWING MACHINE	
	ST-7800D-5UTE	HIGH SPEED DIRECT DRIVE 2-NEEDLE 5-THREAD OVERLOCK CHAIN STITCH SEWING MACHINE with AUTOMATIC THREAD TRIMMER	
	ST-7500H	DIRECT DRIVE CYLINDER BED 4-NEEDLE INTERLOCK CHAIN STITCH SEWING MACHINE	56
	ST-7500ML-3	DIRECT DRIVE CYLINDER BED 3-NEEDLE INTERLOCK CHAIN STITCH SEWING MACHINE	
	ST-7500ML-3S	DIRECT DRIVE SMALL CYLINDER BED 3-NEEDLE INTERLOCK CHAIN STITCH SEWING MACHINE	
	ST-7500ML-4S	DIRECT DRIVE SMALL CYLINDER BED 4-NEEDLE INTERLOCK CHAIN STITCH SEWING MACHINE	
	ST-8500M	DIRECT DRIVE FLAT BED 4-NEEDLE INTERLOCK CHAIN STITCH SEWING MACHINE	57
	ST-8500M-3	DIRECT DRIVE FLAT BED 3-NEEDLE INTERLOCK CHAIN STITCH SEWING MACHINE	
Other Sewing Machine	ST-168M	1-NEEDLE, DOUBLE THREAD LOCK STITCH SIDE-SHOE SEWING MACHINE - Middle Hook (Chain Structure Driving)	58
	ST-168S	1-NEEDLE, DOUBLE THREAD LOCK STITCH SIDE-SHOE SEWING MACHINE - Small Hook (Chain Structure Driving)	
	ST-168TTZZ	2-NEEDLE, DOUBLE THREAD LOCK STITCH SEATED TYPE SHOE-BORDER SEWING MACHINE with STRAIGHT HORN	59
	ST-169L	1-NEEDLE, DOUBLE THREAD LOCK STITCH SEATED TYPE SHOE-BORDER STITCHER with CHIANLESS DRIVING 0x HORN - Large Hook	60
	ST-169M	1-NEEDLE, DOUBLE THREAD LOCK STITCH SEATED TYPE SHOE-BORDER STITCHER with CHIANLESS DRIVING 0x HORN - Middle Hook	
	ST-169S	1-NEEDLE, DOUBLE THREAD LOCK STITCH SEATED TYPE SHOE-BORDER STITCHER with CHIANLESS DRIVING 0x HORN - Small Hook	
	ST-269L	1-NEEDLE, DOUBLE THREAD LOCK STITCH SEATED TYPE SHOE-BORDER STITCHER - Large Hook	61
	ST-269M	1-NEEDLE, DOUBLE THREAD LOCK STITCH SEATED TYPE SHOE-BORDER STITCHER - Middle Hook	
	ST-269S	1-NEEDLE, DOUBLE THREAD LOCK STITCH SEATED TYPE SHOE-BORDER STITCHER - Small Hook	
	ST-2972	SHOE REPAIR MACHINE	62
Spray Machine	ST-6003D	DIRECT DRIVE SINGLE THREAD OVERSEAMING MACHINE FOR INSOLING	63
	ST-6003D-7	DIRECT DRIVE SINGLE THREAD OVERSEAMING MACHINE FOR INSOLING with AUTOMATIC THREAD TRIMMER	
	ST-296	AUTOMATIC CEMENT SEPARATING SIDES & POUNDING MACHINE	64
	ST-298	FULLY AUTOMATIC HOT-CEMENT EDGE FOLDING MACHINE	
Cutting Machine	ST-601	HOT MELT GLUE SPRAY MACHINE	65
	ST-603	HOT MELT GLUE ROLLER MACHINE	
	AP-1212Y	CNC CUTTING MACHINE	66
	ST-77	SKIVING MACHINE	67
	ST-266	DIGITAL SKIVING MACHINE	68
	ST-866U	AUTOMATIC ULTRASONIC FOLDING & CUTTING MACHINE	69
	TW-588/3	TRAVELING HEAD CUTTING MACHINE (25T)	70
	TW-588/40	TRAVELING HEAD CUTTING MACHINE (40T)	
Embroidery Machine	TYL-966A	FORM SKIVING MACHINE	71
	SF-901	EMBROIDERY MACHINE (1 Head, 9 Colors)	72,73
	SF-906	EMBROIDERY MACHINE (6 Heads, 9 Colors)	
	SF-920	EMBROIDERY MACHINE (20 Heads, 9 Colors)	
	SF-1201	EMBROIDERY MACHINE (1 Head, 12 Colors)	
	SF-1206	EMBROIDERY MACHINE (6 Heads, 12 Colors)	
	SF-1220	EMBROIDERY MACHINE (20 Heads, 12 Colors)	
	SFT-10606	CORDING EMBROIDERY MACHINE (6 Heads, (1+6) Colors)	
	SFT-10610	CORDING EMBROIDERY MACHINE (10 Heads, (1+6) Colors)	
	SFT-10616	CORDING EMBROIDERY MACHINE (16 Heads, (1+6) Colors)	

PATTERN SEWING MACHINE

ST-1010HS

ELECTRONICALLY CONTROLLED, PATTERN SEWING MACHINE. (100mm X 100mm)



MODEL CODE

ST-1010HS-

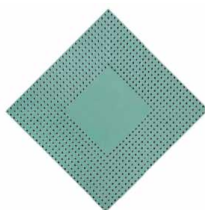
HS	Heavy	-	None
GS	General	20	Removable Side
		25	Removable Reverse
		3D	3D Sewing

DETAILED INFORMATION



ST-500

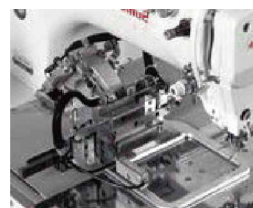
The large 7-inch screen developed with SUNTECH's unique technology and the easy-to-operate touch screen OP-Box is installed as standard for easy and convenient program creation and editing.



The X and Y feed plates controlled by the encoder of motor contribute to sew at the exact position.



Increase productivity by reducing the number of bobbin exchanges due to the adoption of 2X shuttle hook.



Left and right movable inversion device. (option)
※ ST-1010HS-25

SPECIFICATION

MODEL	ST-1010HS
Sewing Area (X) x (Y)	100 mm X 100 mm
Stitch Form	Lock Stitch 1-Needle
Needle	DP x 17 (#16~#23)
Hook	Double-capacity shuttle hook
Max. sewing speed	2,700 spm/min (stitch length 3mm or less)
Main Motor	AC Servo Motor 750W (Direct-drive system)
X,Y Feeding Motor	AC Stepping Motor 550W (0.05 mm / 1 Pulse) with encoder
Presser Foot Drive Method	DC Stepping Motor
Settable stitch length	0.05 ~ 12.7 mm
Total Capacity of Stitches	4,000,000 Stitches (by built-in memory)
Max. number of stitches	20,000 stitches per program
Max. number of programs	~ 999
Stepping presser foot stroke	0 ~ 10 mm
Data Storage Way	USB / Flash memory
Power	Single phase 220V
Air pressure / Consumption	0.5 Mpa 1.71L/min
ETC.	Removable Side ※ ST-1010HS-20, Removable Reverse ※ ST-1010HS-25
Weight	155 Kg
Measurement (L) x (W) x (H)	800 x 1200 x 1160 (mm)

ST-1510HS

ELECTRONICALLY CONTROLLED, PATTERN SEWING MACHINE. (150mm X 100mm)



■ MODEL CODE

ST-1510HS-

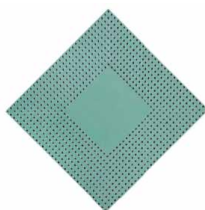
HS	Heavy	-	None
GS	General	20	Removable Side
		25	Removable Reverse
		3D	3D Sewing

■ DETAILED INFORMATION



ST-500

The large 7-inch screen developed with SUNTECH's unique technology and the easy-to-operate touch screen OP-Box is installed as standard for easy and convenient program creation and editing.



The X and Y feed plates controlled by the encoder of motor contribute to sew at the exact position.



Increase productivity by reducing the number of bobbin exchanges due to the adoption of 2X shuttle hook.



Left and right movable inversion device. (option)
※ ST-1510HS-25

■ SPECIFICATION

MODEL	ST-1510HS
Sewing Area (X) x (Y)	150 mm X 100 mm
Stitch Form	Lock Stitch 1-Needle
Needle	DP x 17 (#16~#23)
Hook	Double-capacity shuttle hook
Max. sewing speed	2,700 spm/min (stitch length 3mm or less)
Main Motor	AC Servo Motor 750W (Direct-drive system)
X,Y Feeding Motor	AC Stepping Motor 550W (0.05 mm / 1 Pulse) with encoder
Presser Foot Drive Method	DC Stepping Motor
Settable stitch length	0.05 ~ 12.7 mm
Total Capacity of Stitches	4,000,000 Stitches (by built-in memory)
Max. number of stitches	20,000 stitches per program
Max. number of programs	~ 999
Stepping presser foot stroke	0 ~ 10 mm
Data Storage Way	USB / Flash memory
Power	Single phase 220V
Air pressure / Consumption	0.5 Mpa 1.71L/min
ETC.	Removable Side ※ ST-1510HS-20, Removable Reverse ※ ST-1510HS-25
Weight	160 Kg
Measurement (L) x (W) x (H)	800 x 1200 x 1160 (mm)

PATTERN SEWING MACHINE

ST-2210HS

ELECTRONICALLY CONTROLLED, PATTERN SEWING MACHINE. (220mm X 100mm)



■ MODEL CODE

ST-2210HS-

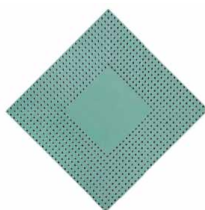
HS	Heavy	-	None
GS	General	20	Removable Side
HA	for Airbag	25	Removable Reverse
		3D	3D Sewing

■ DETAILED INFORMATION



ST-500

The large 7-inch screen developed with SUNTECH's unique technology and the easy-to-operate touch screen OP-Box is installed as standard for easy and convenient program creation and editing.



The X and Y feed plates controlled by the encoder of motor contribute to sew at the exact position.



Left and right movable press plate device. (option)
※ ST-2210HS-20



Left and right movable inversion device. (option)
※ ST-2210HS-25

■ SPECIFICATION

MODEL	ST-2210HS
Sewing Area (X) x (Y)	220 mm X 100 mm
Stitch Form	Lock Stitch 1-Needle
Needle	DP x 17 (#16~#23)
Hook	Double-capacity shuttle hook
Max. sewing speed	2,700 spm/min (stitch length 3mm or less)
Main Motor	AC Servo Motor 750W (Direct-drive system)
X,Y Feeding Motor	AC Stepping Motor 550W (0.05 mm / 1 Pulse) with encoder
Presser Foot Drive Method	DC Stepping Motor
Settable stitch length	0.05 ~ 12.7 mm
Total Capacity of Stitches	4,000,000 Stitches (by built-in memory)
Max. number of stitches	20,000 stitches per program
Max. number of programs	~ 999
Stepping persser foot stroke	0 ~ 10 mm
Data Storage Way	USB / Flash memory
Power	Single phase 220V
Air pressure / Consumption	0.5 Mpa 1.71L/min
ETC.	Removable Side ※ ST-2210HS-20, Removable Reverse ※ ST-2210HS-25
Weight	162 Kg
Measurement (L) x (W) x (H)	800 x 1200 x 1160 (mm)

ST-2210HS-30

ELECTRONICALLY CONTROLLED, PATTERN SEWING MACHINE. (220mm X 100mm)
- with SHOELACE LOOP DEVICE for TONGUE

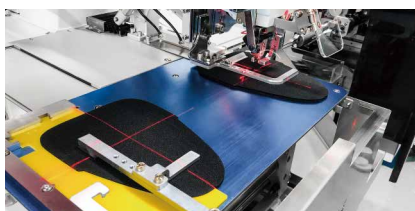


■ MODEL CODE

ST-2210HS-30

HS	Heavy	SHOELACE LOOP DEVICE for TONGUE
GS	General	

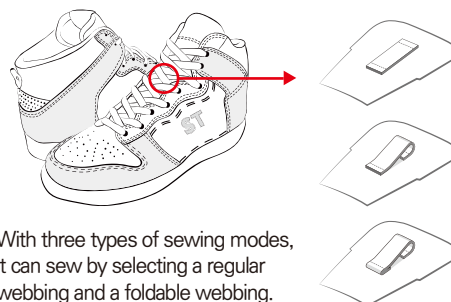
■ DETAILED INFORMATION



Equipped with a semi-automatic tongue transfer device to improve productivity by automatically transferring the tongue to the clamp when putting it on the jig during sewing.



A 7-inch easy-to-manipulate touch screen panel that can accurately adjust the location of the webbing.



With three types of sewing modes, it can sew by selecting a regular webbing and a foldable webbing.

■ SPECIFICATION

MODEL	ST-2210HS-30
Sewing Area (X) x (Y)	220 mm X 100 mm
Stitch Form	Lock Stitch 1-Needle
Needle	DP x 17 (#16~#23)
Hook	Double-capacity shuttle hook
Max. sewing speed	2,700 spm/min (stitch length 3mm or less)
Main Motor	AC Servo Motor 750W (Direct-drive system)
X,Y Feeding Motor	AC Stepping Motor 550W (0.05 mm / 1 Pulse) with encoder
Presser Foot Drive Method	DC Stepping Motor
Settable stitch length	0.05 ~ 12.7 mm
Total Capacity of Stitches	4,000,000 Stitches (by built-in memory)
Max. number of stitches	20,000 stitches per program
Max. number of programs	~ 999
Stepping presser foot stroke	0 ~ 10 mm
Data Storage Way	USB / Flash memory
Power	Single phase 220V
Air pressure / Consumption	0.5 Mpa 1.71L/min
ETC.	with Shoelace Loop Device for Tongue
Weight	221 Kg
Measurement (L) x (W) x (H)	840 x 1340 x 1250 (mm)

PATTERN SEWING MACHINE

ST-2210HS-3D

ELECTRONICALLY CONTROLLED, 3D PATTERN SEWING MACHINE. (220mm X 100mm)



■ MODEL CODE

ST-2210HS-3D

HS	Heavy	3D Attachment
GS	General	

■ DETAILED INFORMATION



ST-500

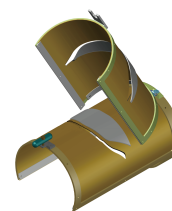
The large 7-inch screen developed with SUNTECH's unique technology and the easy-to-operate touch screen OP-Box is installed as standard for easy and convenient program creation and editing.



Easily sewing demanding stereoscopic works such as Heal and Toe.



Provide extra clamps to settle new work during 3D sewing.



A wide range of work that can be sewn in various sizes.
※ Work range : 250 x 90mm

■ SPECIFICATION

MODEL	ST-2210HS-3D
Sewing Area (X) x (Y)	220 mm X 100 mm
Stitch Form	Lock Stitch 1-Needle
Needle	DP x 17 (#16~#23)
Hook	2X Double-capacity shuttle hook
Max. sewing speed	2,700 spm/min (stitch length 3mm or less)
Main Motor	AC Servo Motor 750W (Direct-drive system)
X,Y Feeding Motor	AC Stepping Motor 550W (0.05 mm / 1 Pulse) with encoder
Presser Foot Drive Method	DC Stepping Motor
Settable stitch length	0.05 ~ 12.7 mm
Total Capacity of Stitches	4,000,000 Stitches (by built-in memory)
Max. number of stitches	20,000 stitches per program
Max. number of programs	~ 999
Stepping presser foot stroke	0 ~ 10 mm
Data Storage Way	USB / Flash memory
Power	Single phase 220V
Air pressure / Consumption	0.5 Mpa 1.71L/min
ETC.	with 3D Clamp
Weight	175 Kg
Measurement (L) x (W) x (H)	800 x 1200 x 1160 (mm)

ST-3020HS

ELECTRONICALLY CONTROLLED, PATTERN SEWING MACHINE. (300mm X 200mm)

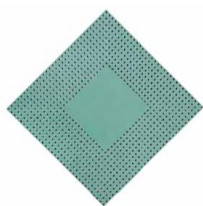


■ MODEL CODE

ST-3020HS-

HS	Heavy	-	None
GS	General	20	Removable Side
		25	Removable Reverse

■ DETAILED INFORMATION



The X and Y feed plates controlled by the encoder of motor contribute to sew at the exact position.



Designs are read quickly and accurately by scanning Bar-codes or QR codes, so it prevents fabric defects and damage to machines and pallets that can occur



It improves stitch tension when using heavy thread or sewing in the reverse direction of the hook's rotation.



- Total eight bobbins are set in the bobbin changer and changed automatically before the bobbin thread.
- It contributes to lower the downtime and defect rate. (Option by order)

■ SPECIFICATION

MODEL	ST-3020HS
Sewing Area (X) x (Y)	300 mm X 200 mm
Stitch Form	Lock Stitch 1-Needle
Needle	DP x 17 (#16~#23)
Hook	Double-capacity shuttle hook
Max. sewing speed	2,700 spm/min (stitch length 3mm or less)
Main Motor	AC Servo Motor 750W (Direct-drive system)
X,Y Feeding Motor	AC Stepping Motor 550W (0.05 mm / 1 Pulse) with encoder
Presser Foot Drive Method	DC Stepping Motor
Settable stitch length	0.05 ~ 12.7 mm
Total Capacity of Stitches	4,000,000 Stitches (by built-in memory)
Max. number of stitches	20,000 stitches per program
Max. number of programs	~ 999
Stepping persser foot stroke	0 ~ 10 mm
Data Storage Way	USB / Flash memory
Power	Single phase 220V
Air pressure / Consumption	0.5 Mpa 1.71L/min
ETC.	Removable Side ※ ST-3020HS-20, Removable Reverse ※ ST-3020HS-25
Weight	290 Kg
Measurement (L) x (W) x (H)	1160 x 1200 x 1220 (mm)

PATTERN SEWING MACHINE

ST-3020HS-3D

ELECTRONICALLY CONTROLLED, 3D PATTERN SEWING MACHINE.
(300mm X 200mm)



■ MODEL CODE

ST-3020HS-3D

HS	Heavy	3D Attachment
GS	General	

■ DETAILED INFORMATION



ST-500

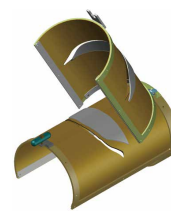
The large 7-inch screen developed with SUNTECH's unique technology and the easy-to-operate touch screen OP-Box is installed as standard for easy and convenient program creation and editing.



Easily sewing demanding stereoscopic works such as Heal and Toe.



Provide extra clamps to settle new work during 3D sewing.



A wide range of work that can be sewn in various sizes.
※ Work range : 300 x 190mm

■ SPECIFICATION

MODEL	ST-3020HS-3D
Sewing Area (X) x (Y)	300 mm X 200 mm
Stitch Form	Lock Stitch 1-Needle
Needle	DP x 17 (#16~#23)
Hook	Double-capacity shuttle hook
Max. sewing speed	2,700 spm/min (stitch length 3mm or less)
Main Motor	AC Servo Motor 750W (Direct-drive system)
X,Y Feeding Motor	AC Servo Motor 750W (0.05 mm / 1 Pulse)
Presser Foot Drive Method	DC Stepping Motor
Settable stitch length	0.05 ~ 12.7 mm
Total Capacity of Stitches	4,000,000 Stitches (by built-in memory)
Max. number of stitches	20,000 stitches per program
Max. number of programs	~ 999
Stepping presser foot stroke	0 ~ 10 mm
Data Storage Way	USB / Flash memory
Power	Single phase 220V
Air pressure / Consumption	0.5 Mpa 1.71L/min
ETC.	with 3D Clamp
Weight	305 Kg
Measurement (L) x (W) x (H)	1160 x 1200 x 1220 (mm)

ST-3020HS-P

ELECTRONICALLY CONTROLLED, PATTERN PUNCHING
& SEWING MACHINE (300mm x 200mm)



■ MODEL CODE

ST-3020HS-P

HS	Heavy	PUNCHING & SEWING
GS	General	

■ DETAILED INFORMATION

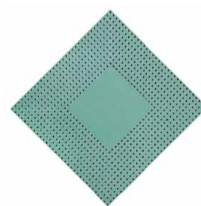


ST-500

The large 7-inch screen developed with SUNTECH's unique technology and the easy-to-operate touch screen OP-Box is installed as standard for easy and convenient program creation and editing.



Speed up work and increase production due to simultaneous digitizing after design sewing.



The X and Y feed plates controlled by the encoder of motor contribute to sew at the exact position.



Designs are read quickly and accurately by scanning Bar-codes or QR codes, so it prevents fabric defects and damage to machines and pallets that can occur by the operator. (option)

■ SPECIFICATION

MODEL	ST-3020HS-P
Sewing Area (X) x (Y)	300 mm X 200 mm
Stitch Form	Lock Stitch 1-Needle
Needle	DP x 17 (#16~#23)
Hook	Double-capacity shuttle hook
Max. sewing speed	2,700 spm/min (stitch length 3mm or less)
Main Motor	AC Servo Motor 750W
X,Y Feeding Motor	AC Stepping Motor 550W (0.05 mm / 1 Pulse) with encoder
Presser Foot Drive Method	DC Stepping Motor
Settable stitch length	0.05 ~ 12.7 mm
Total Capacity of Stitches	4,000,000 Stitches (by built-in memory)
Max. number of stitches	20,000 stitches per program
Max. number of programs	~ 999
Stepping presser foot stroke	0 ~ 10 mm
Data Storage Way	USB / Flash memory
Power	Single phase 220V
Air pressure / Consumption	0.5 Mpa 1.71L/min
ETC.	with Punching Device. Punch \varnothing 1.0 ~ \varnothing 3.8
Weight	310 Kg
Measurement (L) x (W) x (H)	1160 x 1200 x 1220 (mm)

PATTERN SEWING MACHINE

ST-3020HS-3(4) Turntable

ELECTRONICALLY CONTROLLED, PATTERN SEWING MACHINE. (300mm x 200mm) - with 3(4) TURNTABLE



■ MODEL CODE

ST-3020HS-□ Turntable

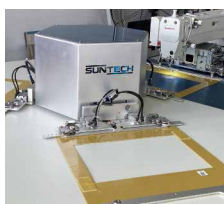
HS	Heavy	-	None
GS	General	3	3 Turntable
		4	4 Turntable

■ DETAILED INFORMATION



ST-500

The large 7-inch screen developed with SUNTECH's unique technology and the easy-to-operate touch screen OP-Box is installed as standard for easy and convenient program creation and editing.



- Automatically load & unload pallets using turntable structure.
- Sewing design for work by interlocking Bar-code or QR code.
- Use 3 pallets (ST-3020HS-3 Turntable)

- Use 4 pallets (ST-3020HS-4 Turntable)
※ with Dual Head

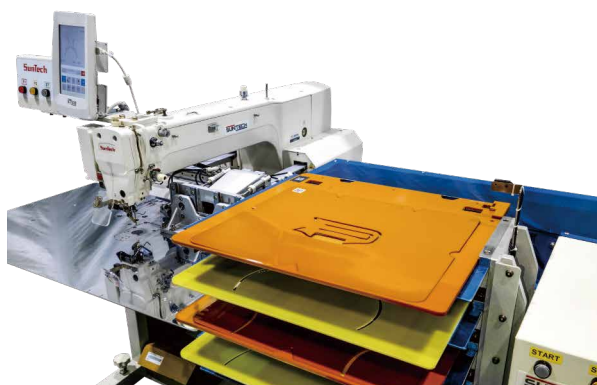
Designs are read quickly and accurately by scanning Bar-codes or QR codes, so it prevents fabric defects and damage to machines and pallets that can occur by the operator. (option)

■ SPECIFICATION

MODEL	ST-3020HS-3(4) Turntable
Sewing Area (X) x (Y)	300 mm X 200 mm
Stitch Form	Lock Stitch 1-Needle
Needle	DP x 17 (#16~#23)
Hook	Double-capacity shuttle hook
Max. sewing speed	2,700 spm/min (stitch length 3mm or less)
Main Motor	AC Servo Motor 750W (Direct-drive system)
X,Y Feeding Motor	AC Stepping Motor 550W (0.05 mm / 1 Pulse) with encoder
Presser Foot Drive Method	DC Stepping Motor
Settable stitch length	0.05 ~ 12.7 mm
Total Capacity of Stitches	4,000,000 Stitches (by built-in memory)
Max. number of stitches	20,000 stitches per program
Max. number of programs	~ 999
Stepping persser foot stroke	0 ~ 10 mm
Data Storage Way	USB / Flash memory
Power	Single phase 220V
Air pressure / Consumption	0.5 Mpa 1.71L/min
ETC.	with 3 Turntable ※ ST-3020HS-3 Turntable, with 4 Turntable ※ ST-3020HS-4 Turntable
Weight	290 Kg
Measurement (L) x (W) x (H)	1160 x 1200 x 1220 (mm)

ST-3020HS-5P

ELECTRONICALLY CONTROLLED, PATTERN SEWING MACHINE. (300mm x 200mm)
- with AUTO 5-PALLET FEEDING SYSTEM



■ MODEL CODE

ST-3020HS-5P

HS	Heavy	AUTO 5-PALLET FEEDING SYSTEM
GS	General	

■ DETAILED INFORMATION



ST-500

The large 7-inch screen developed with SUNTECH's unique technology and the easy-to-operate touch screen OP-Box is installed as standard for easy and convenient program creation and editing.



- Automatically load & unload pallets using a five stage palette auto-dispenser.
- Sewing design for work by interlocking Bar-code or QR code.



Designs are read quickly and accurately by scanning Bar-codes or QR codes, so it prevents fabric defects and damage to machines and pallets that can occur by the operator. (option)

■ SPECIFICATION

MODEL	ST-3020HS-5P
Sewing Area (X) x (Y)	300 mm X 200 mm
Stitch Form	Lock Stitch 1-Needle
Needle	DP x 17 (#16~#23)
Hook	Double-capacity shuttle hook
Max. sewing speed	2,700 spm/min (stitch length 3mm or less)
Main Motor	AC Servo Motor 750W (Direct-drive system)
X,Y Feeding Motor	AC Stepping Motor 550W (0.05 mm / 1 Pulse) with encoder
Presser Foot Drive Method	DC Stepping Motor
Settable stitch length	0.05 ~ 12.7 mm
Total Capacity of Stitches	4,000,000 Stitches (by built-in memory)
Max. number of stitches	20,000 stitches per program
Max. number of programs	~ 999
Stepping presser foot stroke	0 ~ 10 mm
Data Storage Way	USB / Flash memory
Power	Single phase 220V
Air pressure / Consumption	0.5 Mpa 1.71L/min
ETC.	with Auto 5-Pallet Feeding System
Weight	360 Kg
Measurement (L) x (W) x (H)	1160 x 1440 x 1350 (mm)

PATTERN SEWING MACHINE

ST-3020HS-50

ELECTRONICALLY CONTROLLED, PATTERN SEWING MACHINE. (300mm x 200mm)
- with SHOELACE LOOP DEVICE



■ MODEL CODE

ST-3020HS-50

HS	Heavy	SHOELACE LOOP DEVICE
GS	General	

■ DETAILED INFORMATION

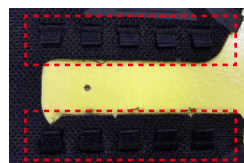


ST-500

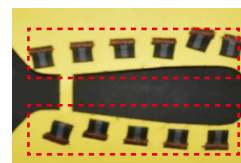
The large 7-inch screen developed with SUNTECH's unique technology and the easy-to-operate touch screen OP-Box is installed as standard for easy and convenient program creation and editing.



Designs are read quickly and accurately by scanning Bar-codes or QR codes, so it prevents fabric defects and damage to machines and pallets that can occur by the operator. (option)



Straight type webbing sewing.



Round type webbing sewing.

■ SPECIFICATION

MODEL	ST-3020HS-50
Sewing Area (X) x (Y)	300 mm X 200 mm
Stitch Form	Lock Stitch 1-Needle
Needle	DP x 17 (#16~#23)
Hook	Double-capacity shuttle hook
Max. sewing speed	2,700 spm/min (stitch length 3mm or less)
Main Motor	AC Servo Motor 750W (Direct-drive system)
X,Y Feeding Motor	AC Stepping Motor 550W (0.05 mm / 1 Pulse) with encoder
Presser Foot Drive Method	DC Stepping Motor
Settable stitch length	0.05 ~ 12.7 mm
Total Capacity of Stitches	4,000,000 Stitches (by built-in memory)
Max. number of stitches	20,000 stitches per program
Max. number of programs	~ 999
Stepping persser foot stroke	0 ~ 10 mm
Data Storage Way	USB / Flash memory
Power	Single phase 220V
Air pressure / Consumption	0.5 Mpa 1.71L/min
ETC.	with Automatic 3-strap system
Weight	360 Kg
Measurement (L) x (W) x (H)	1250 x 1570 x 1420 (mm)

ST-3020HS-C2(C3)

ELECTRONICALLY CONTROLLED, PATTERN SEWING MACHINE.
(300mm x 200mm) - MULTI NEEDLE (2-COLOR / 3-COLOR CHANGE)

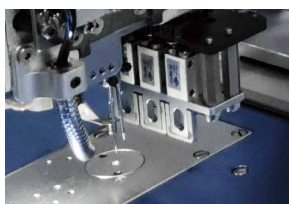


■ MODEL CODE

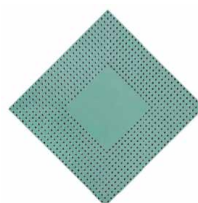
ST-3020HS-C2

HS	Heavy	C2	2-Color Change
GS	General	C3	3-Color Change

■ DETAILED INFORMATION



- Reduce personnel and increase productivity by using two or three color of upper thread for operation of two or three needle bars in one machine.
- use 2-needle-bar (ST-3020HS-C2)
- use 3-needle-bar (ST-3020HS-C3)



The X and Y feed plates controlled by the encoder of motor contribute to sew at the exact position.



Designs are read quickly and accurately by scanning Bar-codes or QR codes, so it prevents fabric defects and damage to machines and pallets that can occur by the operator. (option)

■ SPECIFICATION

MODEL	ST-3020HS-C2	ST-3020HS-C3
Sewing Area (X) x (Y)	300 mm X 200 mm	300 mm X 200 mm
Stitch Form	Lock Stitch 2-Needle	Lock Stitch 3-Needle
Needle	DP x 17 (#16~#23)	DP x 17 (#16~#23)
Hook	Double-capacity shuttle hook	Double-capacity shuttle hook
Max. sewing speed	2,700 spm/min (stitch length 3mm or less)	2,700 spm/min (stitch length 3mm or less)
Main Motor	AC Servo Motor 750W (Direct-drive system)	AC Servo Motor 750W (Direct-drive system)
X,Y Feeding Motor	AC Stepping Motor 550W (0.05 mm / 1 Pulse) with encoder	AC Stepping Motor 550W (0.05 mm / 1 Pulse) with encoder
Presser Foot Drive Method	DC Stepping Motor	DC Stepping Motor
Settable stitch length	0.05 ~ 12.7 mm	0.05 ~ 12.7 mm
Total Capacity of Stitches	4,000,000 Stitches (by built-in memory)	4,000,000 Stitches (by built-in memory)
Max. number of stitches	20,000 stitches per program	20,000 stitches per program
Max. number of programs	~ 999	~ 999
Stepping presser foot stroke	0 ~ 10 mm	0 ~ 10 mm
Data Storage Way	USB / Flash memory	USB / Flash memory
Power	Single phase 220V	Single phase 220V
Air pressure / Consumption	0.5 Mpa 1.71L/min	0.5 Mpa 1.71L/min
ETC.	2-Color Change	3-Color Change
Weight	305 Kg	305 Kg
Measurement (L) x (W) x (H)	1160 x 1200 x 1220 (mm)	1160 x 1200 x 1220 (mm)

PATTERN SEWING MACHINE

ST-3020HS-6S

ELECTRONICALLY CONTROLLED, PATTERN SEWING MACHINE. (300mm x 200mm)
- with AUTOMATIC 3-STRAP SYSTEM



■ MODEL CODE

ST-3020HS-6S

HS	Heavy	AUTOMATIC 3-STRAP SYSTEM
GS	General	

■ DETAILED INFORMATION



ST-500

The large 7-inch screen developed with SUNTECH's unique technology and the easy-to-operate touch screen OP-Box is installed as standard for easy and convenient program creation and editing.



- Attachment for 3-STRAP automatic sewing.
 - Sewing designs such as 3-STRAP and Deco at the same time.
 - Can be used as a computer sewing machine for ST-3020HS.
- ※ Modularization of computer sewing machines.



Designs are read quickly and accurately by scanning Bar-codes or QR codes, so it prevents fabric defects and damage to machines and pallets that can occur by the operator. (option)

■ SPECIFICATION

MODEL	ST-3020HS-5P
Sewing Area (X) x (Y)	300 mm X 200 mm
Stitch Form	Lock Stitch 1-Needle
Needle	DP x 17 (#16~#23)
Hook	Double-capacity shuttle hook
Max. sewing speed	2,700 spm/min (stitch length 3mm or less)
Main Motor	AC Servo Motor 750W (Direct-drive system)
X,Y Feeding Motor	AC Stepping Motor 550W (0.05 mm / 1 Pulse) with encoder
Presser Foot Drive Method	DC Stepping Motor
Settable stitch length	0.05 ~ 12.7 mm
Total Capacity of Stitches	4,000,000 Stitches (by built-in memory)
Max. number of stitches	20,000 stitches per program
Max. number of programs	~ 999
Stepping presser foot stroke	0 ~ 10 mm
Data Storage Way	USB / Flash memory
Power	Single phase 220V
Air pressure / Consumption	0.5 Mpa 1.71L/min
ETC.	with Automatic 3-strap system
Weight	360 Kg
Measurement (L) x (W) x (H)	1160 x 1440 x 1350 (mm)

ST-6040HS

ELECTRONICALLY CONTROLLED, PATTERN SEWING MACHINE. (600mm x 400mm)



■ MODEL CODE

ST - 6040 **HS**

HS	Heavy
GS	General

■ DETAILED INFORMATION



The small remote control allows easy portability and design creation and editing.



The pallet is read automatically so, the sewing can be start as soon as pallet is locked.
※ SPA System (option)



- Total eight bobbins are set in the bobbin changer and changed automatically before the bobbin thread.
- It contributes to lower the downtime and defect rate. (Option by order)



Designs are read quickly and accurately by scanning Bar-codes or QR codes, so it prevents fabric defects and damage to machines and pallets that can occur by the operator. (option)

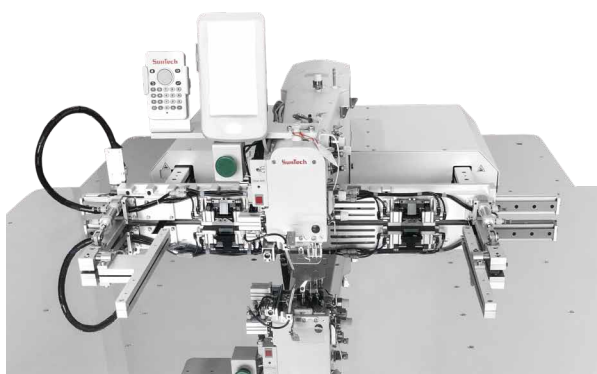
■ SPECIFICATION

MODEL	ST-6040HS
Sewing Area (X) x (Y)	600 mm X 400 mm
Stitch Form	Lock Stitch 1-Needle
Needle	DP x 17 (#16~#23)
Hook	Double-capacity shuttle hook
Max. sewing speed	2,700 spm/min (stitch length 3mm or less)
Main Motor	AC Servo Motor 750W (Direct-drive system)
X,Y Feeding Motor	AC Servo Motor 1KW
Presser Foot Drive Method	DC Stepping Motor
Settable stitch length	0.05 ~ 12.7 mm
Total Capacity of Stitches	4,000,000 Stitches (by built-in memory)
Max. number of stitches	20,000 stitches per program
Max. number of programs	~ 999
Stepping persser foot stroke	0 ~ 10 mm
Data Storage Way	USB / Flash memory
Power	Single phase 220V
Air pressure / Consumption	0.5 Mpa 1.71L/min
ETC.	-
Weight	520 Kg
Measurement (L) x (W) x (H)	1540 x 1400 x 1525 (mm)

PATTERN SEWING MACHINE

ST-6040HS-C2(C3)

ELECTRONICALLY CONTROLLED, PATTERN SEWING MACHINE.
(600mm x 400mm) - MULTI NEEDLE (2-COLOR / 3-COLOR CHANGE)



■ MODEL CODE

ST-6040HS-C2

HS	Heavy	C2	2-Color Change
GS	General	C3	3-Color Change

■ DETAILED INFORMATION



Reduce personnel and increase productivity by using two colors of upper thread for operation of two-needle-bar in one machine.



The pallet is read automatically so, the sewing can be start as soon as pallet is locked.
※ SPA System (option)



- Total eight bobbins are set in the bobbin changer and changed automatically before the bobbin thread.
- It contributes to lower the downtime and defect rate. (Option by order)



Designs are read quickly and accurately by scanning Bar-codes or QR codes, so it prevents fabric defects and damage to machines and pallets that can occur by the operator. (option)

■ SPECIFICATION

MODEL	ST-6040HS-C2	ST-6040HS-C3
Sewing Area (X) x (Y)	600 mm X 400 mm	600 mm X 400 mm
Stitch Form	Lock Stitch 2-Needle	Lock Stitch 3-Needle
Needle	DP x 17 (#16~#23)	DP x 17 (#16~#23)
Hook	Double-capacity shuttle hook	Double-capacity shuttle hook
Maximum Sewing Speed	2,700 spm/min (stitch length 3mm or less)	2,700 spm/min (stitch length 3mm or less)
Main Motor	AC Servo Motor 750W (Direct-drive system)	AC Servo Motor 750W (Direct-drive system)
X,Y Feeding Motor	AC Servo Motor 1KW	AC Servo Motor 1KW
Presser Foot Drive Method	DC Stepping Motor	DC Stepping Motor
Maximum Stitch length	0.05 ~ 12.7 mm	0.05 ~ 12.7 mm
Total Capacity of Stitched	4,000,000 Stitches (by built-in memory)	4,000,000 Stitches (by built-in memory)
Maximum Stitches Per Design	20,000 stitches per program	20,000 stitches per program
Memory Capacity of Design	~ 999	~ 999
Presser Foot Stroke	0 ~ 10 mm	0 ~ 10 mm
Data Storage Way	USB / Flash memory	USB / Flash memory
Power	Single phase 220V	Single phase 220V
Air Pressure	0.5 Mpa 1.71Lmin	0.5 Mpa 1.71Lmin
ETC.	2-Color Change	3-Color Change
Weight	520 Kg	520 Kg
Measurement (L) x (W) x (H)	1540 x 1400 x 1525 (mm)	1540 x 1400 x 1525 (mm)

ST-430D

ELECTRONICALLY CONTROLLED, BARTACK SEWING MACHINE



■ MODEL CODE

ST - 430D

0	Sewing Area 40 X 30 mm
---	------------------------

■ DETAILED INFORMATION



Responding to a variety of sewing range.
※ 40 X 30mm



Equipped with a variety of pressor foot guides for each work application.
※ Eyelet of Hats and shoelace



- Minimize noise and vibration with Direct Servo Motor.
- More responsive than Belt Type, enabling uniform sewing



- Easy to operate the OP Box, making it easy for everyone to use.
- 89 patterns are stored for easy loading of files.

■ SPECIFICATION

MODEL	ST-430D
Sewing Area (X) x (Y)	40 mm X 30 mm
Stitch Form	Lock Stitch 1-Needle
Needle	DP x 5 (#11~#21)
Hook	Shuttle
Max. sewing speed	3,200 spm/min (stitch length 3mm or less)
Main Motor	AC Servo Motor 550W
X,Y Feeding Motor	AC Stepping Motor 550W (0.05 mm / 1 Pulse)
Presser Foot Drive Method	DC Stepping Motor
Settable stitch length	12.7 mm
Number of Store Data	89 ※ Sewing patterns are already saved
Max. number of stitches	~ 999
Stepping persser foot stroke	0 ~ 10 mm
Data Storage Way	Flash memory
Power	Single phase 220V
Air pressure / Consumption	0.5 Mpa 1.71L/min
Weight	115 Kg
Measurement (L) x (W) x (H)	700 x 1200 x 1160 (mm)

PATTERN SEWING MACHINE

CR-3020

ELECTRONICALLY CONTROLLED, PATTERN PUNCHING MACHINE (300mm x 200mm)



■ MODEL CODE

CR-3020

PATTERN PUNCHING

■ DETAILED INFORMATION



Three sizes of punching needles enable a variety of designs and increase productivity.



- Interchangeable with pallet fasteners of the same size as conventional computer sewing machines.
- Pneumatic hook type for easy pallet replacement.



- Easy to replace punching needles in various sizes ($\phi 1.0 \sim \phi 3.8$)
- Customizable the shape of punching needle(ex. triangle, rectangular, oval, etc.)



Designs are read quickly and accurately by scanning Bar-codes or QR codes, so it prevents fabric defects and damage to machines and pallets that can occur by the operator. (option)

■ SPECIFICATION

MODEL	CR-3020
Sewing Area (X) x (Y)	300 mm X 200 mm
Punch size	$\phi 1.0 \sim \phi 3.8$
Maximum Punching Speed	1,000 spm
Main Motor	AC Servo Motor 550W (Direct-drive system)
X,Y Feeding Motor	AC Stepping Motor 550W (0.05 mm / 1 Pulse) with encoder
Total Capacity of Stitched	4,000,000 Stitches (by built-in memory)
Max. number of punches	20,000 punches per program
Memory Capacity of Design	~ 999
Data Storage Way	Flash memory
Power	Single phase 220V
Air pressure / Consumption	0.5 Mpa 1.71L/min
Weight	315 Kg
Measurement (L) x (W) x (H)	1160 x 1200 x 1220 (mm)

POST SEWING MACHINE

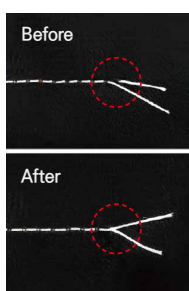
ST-666H

DIRECT DRIVE POST BED 1-NEEDLE ROLLER FEED LOCK STITCH ELECTRONIC PROGRAMMABLE SEWING MACHINE with AUTOMATIC THREAD TRIMMER

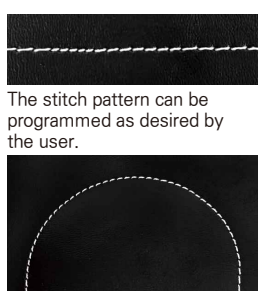


- The stitch pattern can be programmed as desired by the user.
- Equipped the Color LCD with touch panel helps to anyone can easily and conveniently operate the machine.
- User can easily adjust the stitch length with the digitalized stitching length.
- Independent step motor drive / Automatic back tack function.
- The stitch quality in the curve can be beautiful as minimizing the change of stitch by setting and changing two or more stitch length.
- Equipped with automatic trimming and presser foot functions.
- Extreme residue by 3 mm length.
- Equipped with anti-loosening function after trimming.

DETAILED INFORMATION

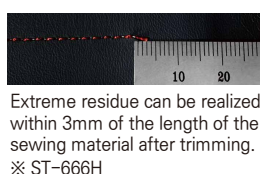


Equipped with anti-loosening function after trimming.



The stitch pattern can be programmed as desired by the user.

The stitch quality in the curve can be beautiful as minimizing the change of stitch by setting and changing two or more stitch length.



※ ST-666H



- Easy to operate with equipped the Color LCD with touch panel.
- Easy to set a stitch width with the pattern programming.



A step motor dedicated to driving the upper and lower rollers is installed to improve the accuracy of stitch length.
※ When sewing back tack, the best sewing quality can be realized by setting the stitch length accurately.

SPECIFICATION

MODEL		ST-666H
Application		Thin~Medium Heavy Materials
Stitch Form		Lock stitch 1~needle
Needle		DP x 5 (#14~#23)
Maximum Sewing Speed		3,000 spm
Maximum Stitch length		7.0 mm
Lift of the Presser Foot	Manual	15.0 mm
	Auto	12.0 mm
Thread Take-up Stroke		72.0 mm
Needle Bar Stroke		43.0 mm
Hook	Type	Rotary Hook
	Direction	Horizontal
Lubrication System		Semi Automatic~Lubrication
Auto Trimmer		O
Automatic Backtacking		O
Automatic Up Foot Lifter		O
Needle Up~Down		O
Motor		Direct Motor
ETC.		Automatic Stitch Length Change Function
Power		Single phase 220V

POST SEWING MACHINE

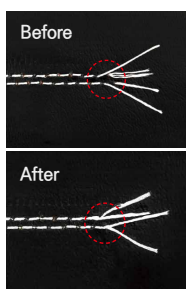
ST-777H

DIRECT DRIVE POST BED 2-NEEDLE ROLLER FEED LOCK STITCH ELECTRONIC PROGRAMMABLE SEWING MACHINE with AUTOMATIC THREAD TRIMMER

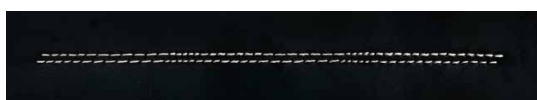


- The stitch pattern can be programmed as desired by the user.
- Equipped the Color LCD with touch panel helps to anyone can easily and conveniently operate the machine.
- User can easily adjust the stitch length with the digitalized stitching length.
- Independent step motor drive / Automatic back tack function.
- The stitch quality in the curve can be beautiful as minimizing the change of stitch by setting and changing two or more stitch length.
- Equipped with automatic trimming and presser foot functions.
- Equipped with anti-loosening function after trimming.

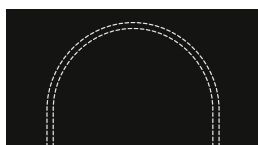
DETAILED INFORMATION



Equipped with anti-loosening function after trimming.



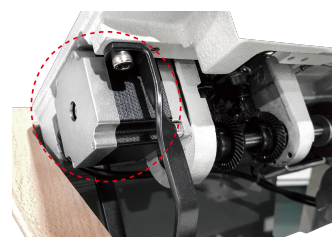
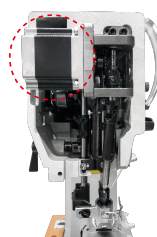
The stitch pattern can be programmed as desired by the user.



The stitch quality in the curve can be beautiful as minimizing the change of stitch by setting and changing two or more stitch length.



- Easy to operate with equipped the Color LCD with touch panel.
- Easy to set a stitch width with the pattern programming.



A step motor dedicated to driving the upper and lower rollers is installed to improve the accuracy of stitch length.
※ When sewing back tack, the best sewing quality can be realized by setting the stitch length accurately.

SPECIFICATION

MODEL		ST-777H
Application		Thin~Medium Heavy Materials
Stitch Form		Lock stitch 2~needle
Needle		DP x 5 (#14~#23)
Maximum Sewing Speed		3,000 spm
Maximum Stitch length		7.0 mm
Lift of the Presser Foot	Manual	15.0 mm
	Auto	12.0 mm
Thread Take-up Stroke		72.0 mm
Needle Bar Stroke		43.0 mm
Hook	Type	Rotary Hook
	Direction	Horizontal
Lubrication System		Semi Automatic~Lubrication
Auto Trimmer		O
Automatic Backtacking		O
Automatic Up Foot Lifter		O
Needle Up~Down		O
Motor		Direct Motor
ETC.		Automatic Stitch Length Change Function
Power		Single phase 220V

ST-857

S E R I E S

POST BED 1-NEEDLE NEEDLE FEED LOCK STITCH SEWING MACHINE
- with AUTOMATIC THREAD TRIMMER



SERIES MODEL CODE

ST-857-7

-	None-Trimmer
7	Trimmer Type

DETAILED INFORMATION



- Accurate transport (needle-feed) by feed-dog and needle bar.
- Improved durability with automatic oiling systems.



Trimming structure with short residual of thread.

※ ST-857-7



Hard post-bed structure facilitates round and curved sewing.

SPECIFICATION

MODEL		ST-857	ST-857-7
Application		Thin~Medium Heavy Materials	Thin~Medium Heavy Materials
Stitch Form		Lock stitch 1-needle	Lock stitch 1-needle
Needle		DP x 5 (#14~#23)	DP x 5 (#14~#23)
Maximum Sewing Speed		2,000 spm	2,000 spm
Maximum Stitch length		7.0 mm	7.0 mm
Lift of the Presser Foot	Manual	7.0 mm	7.0 mm
	Auto	12.6 mm	12.6 mm
Thread Take-up Stroke		52.6 mm	52.6 mm
Needle Bar Stroke		33.4 mm	33.4 mm
Hook	Type	Rotary Hook	Rotary Hook
	Direction	Horizontal	Horizontal
Lubrication System		Semi Automatic-Lubrication	Semi Automatic-Lubrication
Auto Trimmer		X	O
Automatic Backtacking		X	O
Automatic Up Foot Lifter		X	O
Needle Up-Down		O (Saving Motor) / X (Clutch Motor)	O
Motor		Saving Motor / Clutch Motor	Servo Motor
Power		Single phase 220V	Single phase 220V

POST SEWING MACHINE

ST-867 S E R I E S

POST BED 2-NEEDLE NEEDLE FEED, LOCK STITCH SEWING MACHINE
- with AUTOMATIC THREAD TRIMMER



SERIES MODEL CODE

ST-867-7

-	None-Trimmer
7	Trimmer Type

DETAILED INFORMATION

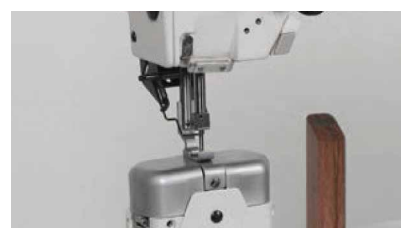


- Accurate transport (needle-feed) by feed-dog and needle bar.
- Improved durability with automatic oiling systems.



Trimming structure with short residual of thread.

※ ST-867-7



Hard post-bed structure facilitates round and curved sewing.

SPECIFICATION

MODEL		ST-867	ST-867-7
Application		Thin~Medium Heavy Materials	Thin~Medium Heavy Materials
Stitch Form		Lock stitch 2~needle	Lock stitch 2~needle
Needle		DP x 5 (#14~#23)	DP x 5 (#14~#23)
Maximum Sewing Speed		2,000 spm	2,000 spm
Maximum Stitch length		7.0 mm	7.0 mm
Lift of the Presser Foot	Manual	7.0 mm	7.0 mm
	Auto	12.6 mm	12.6 mm
Thread Take-up Stroke		52.6 mm	52.6 mm
Needle Bar Stroke		33.4 mm	33.4 mm
Hook	Type	Rotary Hook	Rotary Hook
	Direction	Horizontal	Horizontal
Lubrication System		Semi Automatic~Lubrication	Semi Automatic~Lubrication
Auto Trimmer		X	O
Automatic Backtacking		X	O
Automatic Up Foot Lifter		X	O
Needle Up~Down		O (Saving Motor) / X (Clutch Motor)	O
Motor		Saving Motor / Clutch Motor	Servo Motor
Power		Single phase 220V	Single phase 220V

ST-957

S E R I E S

DIRECT DRIVE POST BED ROLLER FEED 1-NEEDLE LOCK STITCH
SEWING MACHINE - with AUTOMATIC THREAD TRIMMER



SERIES MODEL CODE

ST-957-7LS

BN	None
7LS	Auto Trimmer & Backtack

DETAILED INFORMATION



Needle guide for accurate margin of sewing.



All-in-one control box fitted. adjustable back tack pattern OP Box built-in.



Manual back-tack function.
※ ST-957-7LS



Increased productivity with volume-adjustable speed control.
※ ST-957-7LS



Trimming structure with short residual of thread.
※ ST-957-7LS

SPECIFICATION

MODEL		ST-957BN	ST-957-7LS
Application		Thin~Medium Heavy Materials	Thin~Medium Heavy Materials
Stitch Form		Lock stitch 1-needle	Lock stitch 1-needle
Needle		DP x 5 (#14~#23)	DP x 5 (#14~#23)
Maximum Sewing Speed		3,000 spm	3,000 spm
Maximum Stitch length		5.0 mm	5.0 mm
Lift of the Presser Foot	Manual	7.0 mm	7.0 mm
	Auto	12.6 mm	12.6 mm
Thread Take-up Stroke		52.6 mm	52.6 mm
Needle Bar Stroke		39.0 mm	39.0 mm
Hook	Type	Rotary Hook	Rotary Hook
	Direction	Horizontal	Horizontal
Lubrication System		Semi Automatic-Lubrication	Semi Automatic-Lubrication
Auto Trimmer		X	O
Automatic Backtacking		X	O
Automatic Up Foot Lifter		X	O
Needle Up-Down		O	O
Motor		Direct Motor	Direct Motor
Power		Single phase 220V	Single phase 220V

POST SEWING MACHINE

ST-957-8LS

DIRECT DRIVE POST BED ROLLER FEED 1-NEEDLE LOCK STITCH SEWING MACHINE
- with AUTOMATIC THREAD TRIMMER of EXTREME RESIDUAL THREAD



■ MODEL CODE

ST-957-8LS

AUTOMATIC THREAD TRIMMER of
EXTREME RESIDUAL THREAD

■ DETAILED INFORMATION



Button type back tack, Volume control type speed adjustment, Take a stitch, Simple remote control with pause function.



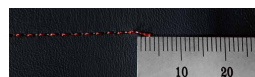
- All-in-one control box fitted.
- Adjustable back tack pattern OP Box built-in.



Manual back-tack function.



Optimizing the design of fixed and moving trimmer structures for extreme residual implementation.



Extreme residue can be realized within 3mm of the length of the sewing material after trimming.

■ SPECIFICATION

MODEL		ST-957-8LS
Application		Thin~Medium Heavy Materials
Stitch Form		Lock stitch 1~needle
Needle		DP x 5 (#14~#23)
Maximum Sewing Speed		3,000 spm
Maximum Stitch length		5.0 mm
Lift of the Presser Foot	Manual	7.0 mm
	Auto	12.6 mm
Thread Take-up Stroke		52.6 mm
Needle Bar Stroke		39.0 mm
Hook	Type	Rotary Hook
	Direction	Horizontal
Lubrication System		Semi Automatic~Lubrication
Auto Trimmer		O
Automatic Backtacking		O
Automatic Up Foot Lifter		O
Needle Up-Down		O
Motor		Direct Motor
Power		Single phase 220V

ST-957-8AS

DIRECT DRIVE POST BED ROLLER FEED 1-NEEDLE LOCK STITCH SEWING MACHINE
- with AUTOMATIC THREAD TRIMMER of EXTREME RESIDUAL THREAD



■ MODEL CODE

ST-957-8AS

AUTOMATIC THREAD TRIMMER of
EXTREME RESIDUAL THREAD



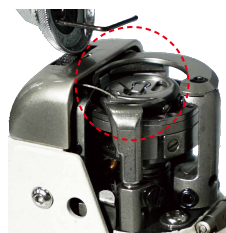
Button type back tack,
Take a stitch, Simple
remote control with
pause function.



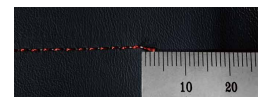
Easy operation with
TOUCH LCD DISPLAY.



Manual back-tack function.
Easy stitch width adjustment
dial.



Optimizing the design of
fixed and moving trimmer
structures for extreme
residual implementation.



Extreme residue can be realized
within 3mm of the length of the
sewing material after trimming.

■ SPECIFICATION

MODEL		ST-957-8AS
Application		Thin~Medium Heavy Materials
Stitch Form		Lock stitch 1~needle
Needle		DP x 5 (#11~#21)
Maximum Sewing Speed		2,500 spm
Maximum Stitch length		7.0 mm
Lift of the Presser Foot	Manual	7.0 mm
	Auto	14.0 mm
Thread Take-up Stroke		59.0 mm
Needle Bar Stroke		41.0 mm
Hook	Type	Rotary Hook
	Direction	Horizontal
Lubrication System		Semi Automatic~Lubrication
Auto Trimmer		O
Automatic Backtacking		O
Automatic Up Foot Lifter		O
Needle Up-Down		O
Motor		Direct Motor
Power		Single phase 220V

POST SEWING MACHINE

ST-957SRB S E R I E S

DIRECT DRIVE SMALL POST BED ROLLER FEED 1-NEEDLE LOCK STITCH SEWING MACHINE



SERIES MODEL CODE

ST-957 **SRB** - **R**

SMALL POST BED

-	None
L	On Left – side Hook
R	On Right – side Hook

DETAILED INFORMATION



Small roller feeding post bed.

- Length: 270 mm
- Perimeter: 170mm



Needle guide for accurate margin sewing.



- All-in-one control box fitted.
- Adjustable back tack pattern OP Box built-in.



Manual back-tack function.



Automatic back-tack function.

SPECIFICATION

MODEL		ST-957SRB	ST-957SRB-L	ST-957SRB-R
Application		Thin-Medium Heavy Materials	Thin-Medium Heavy Materials	Thin-Medium Heavy Materials
Stitch Form		Lock stitch 1-needle	Lock stitch 1-needle	Lock stitch 1-needle
Needle		DP x 5 (#14~#23)	DP x 5 (#14~#23)	DP x 5 (#14~#23)
Maximum Sewing Speed		3,000 spm	3,000 spm	3,000 spm
Maximum Stitch length		5.0 mm	5.0 mm	5.0 mm
Lift of the Presser Foot	Manual	7.0 mm	7.0 mm	7.0 mm
	Auto	12.6 mm	12.6 mm	12.6 mm
Thread Take-up Stroke		52.6 mm	52.6 mm	52.6 mm
Needle Bar Stroke		39.0 mm	39.0 mm	39.0 mm
Hook	Type	Rotary Hook	Rotary Hook	Rotary Hook
	Direction	Horizontal	Horizontal	Horizontal
Lubrication System		Semi Automatic-Lubrication	Semi Automatic-Lubrication	Semi Automatic-Lubrication
Auto Trimmer		X	X	X
Automatic Backtacking		X	X	X
Automatic Up Foot Lifter		O	O	O
Needle Up-Down		O	O	O
ETC.		-	on Left-side Hook	on Right-side Hook
Motor		Direct Motor	Direct Motor	Direct Motor
Power		Single phase 220V	Single phase 220V	Single phase 220V

ST-957SRB-7

DIRECT DRIVE SMALL POST BED ROLLER FEED 1-NEEDLE SEWING MACHINE
- with AUTOMATIC THREAD TRIMMER



■ MODEL CODE

ST-957SRB-7

SMALL
POST BED

AUTOMATIC
THRED TRIMMER

■ DETAILED INFORMATION



Easy operation with
TOUCH LCD DISPLAY.



Small roller feeding post
bed.

- Length: 178 mm
- Perimeter : 170mm



Manual back-tack function.



Automatic back-tack
function. increased
productivity with volume
-adjustable speed control.



Trimming structure with
short residual of thread.

■ SPECIFICATION

MODEL		ST-957SRB-7
Application		Thin~Medium Heavy Materials
Stitch Form		Lock stitch 1-needle
Needle		DP x 5 (#14~#23)
Maximum Sewing Speed		3,000 spm
Maximum Stitch length		5.0 mm
Lift of the Presser Foot	Manual	7.0 mm
	Auto	12.6 mm
Thread Take-up Stroke		52.6 mm
Needle Bar Stroke		39.0 mm
Hook	Type	Rotary Hook
	Direction	Horizontal
Lubrication System		Semi Automatic-Lubrication
Auto Trimmer		O
Automatic Backtacking		O
Automatic Up Foot Lifter		O
Needle Up-Down		O
Motor		Direct Motor
Power		Single phase 220V

POST SEWING MACHINE

ST-967SRB

DIRECT DRIVE SMALL POST BED ROLLER FEED 2-NEEDLE LOCK STITCH SEWING MACHINE



■ MODEL CODE

ST-967 **SRB**

SMALL POST BED

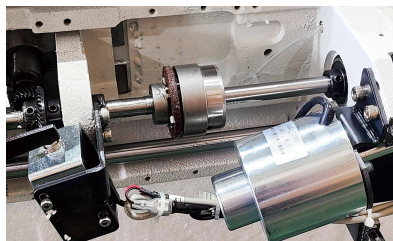
■ DETAILED INFORMATION



- All-in-one control box fitted.
- Adjustable back tack pattern OP Box built-in.



Manual back-tack function.



Automatic knee lifter function.



Small roller feeding post bed.
 • Length: 170 mm
 • Perimeter: 220mm

■ SPECIFICATION

MODEL		ST-967SRB
Application		Thin~Medium Heavy Materials
Stitch Form		Lock stitch 2~needle
Needle		DP x 5 (#14~#23)
Maximum Sewing Speed		3,000 spm
Maximum Stitch length		5.0 mm
Lift of the Presser Foot	Manual	7.0 mm
	Auto	12.6 mm
Thread Take-up Stroke		52.6 mm
Needle Bar Stroke		39.0 mm
Hook	Type	Rotary Hook
	Direction	Horizontal
Lubrication System		Semi Automatic~Lubrication
Auto Trimmer		X
Automatic Backtacking		O
Automatic Up Foot Lifter		O
Needle Up-Down		O
Motor		Direct Motor
Power		Single phase 220V

ST-967

S E R I E S

DIRECT DRIVE POST BED 2-NEEDLE ROLLER FEED LOCK STITCH SEWING MACHINE
- with AUTOMATIC THREAD TRIMMER



SERIES MODEL CODE

ST-967-7LS

BN	None
7LS	Auto trimmer & Backtack

DETAILED INFORMATION



Needle guide for accurate margin sewing.



- All-in-one control box fitted.
- Adjustable back tack pattern OP Box built-in.



Manual back-tack function.
※ ST-967-7LS



Increased productivity with volume-adjustable speed control.
※ ST-967-7LS



Trimming structure with short residual of thread.
※ ST-967-7LS

SPECIFICATION

MODEL		ST-967BN	ST-967-7LS
Application		Thin~Medium Heavy Materials	Thin~Medium Heavy Materials
Stitch Form		Lock stitch 2~needle	Lock stitch 2~needle
Needle		DP x 5 (#14~#23)	DP x 5 (#14~#23)
Maximum Sewing Speed		3,000 spm	3,000 spm
Maximum Stitch length		5.0 mm	5.0 mm
Lift of the Presser Foot	Manual	7.0 mm	7.0 mm
	Auto	12.6 mm	12.6 mm
Thread Take-up Stroke		52.6 mm	52.6 mm
Needle Bar Stroke		39.0 mm	39.0 mm
Hook	Type	Rotary Hook	Rotary Hook
	Direction	Horizontal	Horizontal
Lubrication System		Semi Automatic-Lubrication	Semi Automatic-Lubrication
Auto Trimmer		X	O
Automatic Backtacking		X	O
Automatic Up Foot Lifter		X	O
Needle Up-Down		O	O
Motor		Direct Motor	Direct Motor
Power		Single phase 220V	Single phase 220V

GENERAL SEWING MACHINE

ST-2510 / 2520 S E R I E S

DIRECT DRIVE FLAT BED 1-NEEDLE SEWING MACHINE
- with AUTOMATIC THREAD TRIMMER



SERIES MODEL CODE

ST-2520B-7

1	None-Trimmer	A	THIN	-	None
		B	HEAVY		
2	Trimmer Type	BS	Detachable Con. Box	7	Extreme residual thread

DETAILED INFORMATION



Easy operation with TOUCH LCD DISPLAY.



- All-in-one control box type.
- No noise, no vibration Increase sewing power by connecting the 550W direct servo motor drive installed.



Simple electronic wiper attachment eliminates thread loosening at the start of sewing.



Automatic back-tack function.

SPECIFICATION

MODEL		ST-2510A	ST-2520A	ST-2520A-7	ST-2510B	ST-2520B	ST-2520BS
Application		Thin~Medium Heavy Materials			Heavy Materials		
Stitch Form		Lock stitch 1-needle	Lock stitch 1-needle	Lock stitch 1-needle	Lock stitch 1-needle	Lock stitch 1-needle	Lock stitch 1-needle
Needle		DB x 1 (#9-#18)	DB x 1 (#9-#18)	DB x 1 (#9-#18)	DB x 1 (#19-#23)	DB x 1 (#19-#23)	DB x 1 (#19-#23)
Maximum Sewing Speed		4,000 spm	4,000 spm	4,000 spm	4,000 spm	4,000 spm	4,000 spm
Maximum Stitch length		5.0 mm	5.0 mm	5.0 mm	7.0 mm	7.0 mm	7.0 mm
Lift of the Presser Foot		13.0 mm	13.0 mm	13.0 mm	13.0 mm	13.0 mm	13.0 mm
Thread Take-up Stroke		12.6 mm	12.6 mm	12.6 mm	12.6 mm	12.6 mm	12.6 mm
Needle Bar Stroke		52.6 mm	52.6 mm	52.6 mm	52.6 mm	52.6 mm	52.6 mm
Hook	Type	Rotary Hook	Rotary Hook	Rotary Hook	Rotary Hook	Rotary Hook	Rotary Hook
	Direction	Vertical	Vertical	Vertical	Vertical	Vertical	Vertical
Lubrication System		Automatic-Lubrication	Automatic-Lubrication	Automatic-Lubrication	Automatic-Lubrication	Automatic-Lubrication	Automatic-Lubrication
Auto Trimmer		X	O	O	X	O	O
Automatic Backtacking		X	O	O	X	O	O
Automatic Up Foot Lifter		X	O	O	X	O	X
Needle Up-Down		O	O	O	O	O	O
Motor		Direct Motor	Direct Motor	Direct Motor	Direct Motor	Direct Motor	Direct Motor
Power		Single phase 220V	Single phase 220V	Single phase 220V	Single phase 220V	Single phase 220V	Single phase 220V

ST-250BL

S E R I E S

DIRECT DRIVE FLAT BED 1-NEEDLE LARGE HOOK LOCK STITCH SEWING MACHINE
- with AUTOMATIC THREAD TRIMMER



SERIES MODEL CODE

ST-250 **BL**-**7**

LARGE HOOK

D	None-Trimmer
7	Trimmer Type

DETAILED INFORMATION



Large Hook (2x) reduces bobbin replacement frequency to increase production.



Connecting a direct drive motor to the upper shaft improves the responsiveness and stopping accuracy of the sewing machine and significantly reduces noise and vibration.



Improves convenience with built-in bobbin winder.



- All-in-one control box.
- Simple OP Box built-in.
- Manual back-tack function.
- ※ ST-250BL-7

SPECIFICATION

MODEL		ST-250BL-D	ST-250BL-7
Application		Heavy Materials	Heavy Materials
Stitch Form		Lock stitch 1-needle	Lock stitch 1-needle
Needle		DB x 1 (#19~#23)	DB x 1 (#19~#23)
Maximum Sewing Speed		2,500 spm	2,500 spm
Maximum Stitch length		9.0 mm	9.0 mm
Lift of the Presser Foot	Manual	5.5 mm	5.5 mm
	Auto	13.0 mm	13.0 mm
Thread Take-up Stroke		67.0 mm	67.0 mm
Needle Bar Stroke		33.8 mm	33.8 mm
Hook	Type	Rotary Hook	Rotary Hook
	Direction	Vertical	Vertical
Lubrication System		Automatic-Lubrication	Automatic-Lubrication
Auto Trimmer		X	O
Automatic Backtacking		X	O
Automatic Up Foot Lifter		X	X
Needle Up-Down		O	O
Motor		Direct Motor	Direct Motor
Power		Single phase 220V	Single phase 220V

GENERAL SEWING MACHINE

ST-506-D

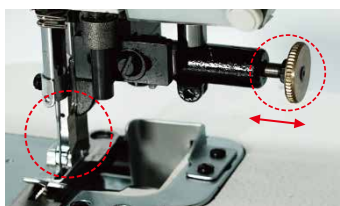
DIRECT DRIVE FLAT BED 1-NEEDLE LOCK STITCH SEWING MACHINE
- with VERTICAL EDGE TRIMMER



■ MODEL CODE

ST - 506 - D

with VERTICAL EDGE TRIMMER



- Perfect and keen cutting ability for all kind of materials for cutting.
- Also to easy adjustable the structure of upper knife that has an distinguished durability.



Reduce noise and vibration with Direct Motor.



- Simple OP Box built-in.
- Manual back-tack function.

■ SPECIFICATION

MODEL		ST-506-D
Application		Medium Heavy Materials
Stitch Form		Lock stitch 1-needle
Needle		DB x 1 (#9~#18)
Maximum Sewing Speed		4,500 spm
Maximum Stitch length		5.0 mm
Lift of the Presser Foot	Manual	5.5 mm
	Auto	13.0 mm
Thread Take-up Stroke		67.0 mm
Needle Bar Stroke		33.8 mm
Hook	Type	Rotary Hook
	Direction	Horizontal
Lubrication System		Semi Auto-Lubrication
Auto Trimmer		X
Automatic Backtacking		X
Automatic Up Foot Lifter		X
Needle Up-Down		O
Motor		Direct Motor
Power		Single phase 220V

ST-380

S E R I E S

CYLINDER BED 1-NEEDLE UNISON FEED LOCK STITCH SEWING MACHINE



SERIES MODEL CODE

S T - 3 8 0 **B L B**

-	None
BL	Large Hook
BLB	Large Hook & Binder

DETAILED INFORMATION



- Using strong feed mechanisms, sewing of thick work pieces enables uniform stitching width.
- Increase productivity with Large Hook (2x) and bobbin.



- Binder-mounted structure facilitates taping operation. ※ ST-380BLB
- Cylinder miniaturization makes it suitable for round work and compact work.



Manual back-tack function.

SPECIFICATION

MODEL		ST-380	ST-380BL	ST-380BLB
Application		Heavy Materials	Heavy Materials	Heavy Materials
Stitch Form		Lock stitch 1-needle	Lock stitch 1-needle	Lock stitch 1-needle
Needle		DP x 17 (#14~#23)	DP x 17 (#14~#23)	DP x 17 (#14~#23)
Maximum Sewing Speed		2,000 spm	2,000 spm	2,000 spm
Maximum Stitch length		6.0 mm	6.0 mm	6.0 mm
Lift of the Presser Foot		6.0 mm	6.0 mm	6.0 mm
Thread Take-up Stroke		52.6 mm	52.6 mm	52.6 mm
Needle Bar Stroke		39.0 mm	39.0 mm	39.0 mm
Hook	Type	Rotary Hook	Rotary Hook	Rotary Hook
	Direction	Vertical	Vertical	Vertical
Lubrication System		Semi Auto-Lubrication	Semi Auto-Lubrication	Semi Auto-Lubrication
Auto Trimmer		X	X	X
Automatic Backtacking		X	X	X
Automatic Up Foot Lifter		X	X	X
Needle Up-Down		O (Saving Motor) / X (Clutch Motor)	O (Saving Motor) / X (Clutch Motor)	O (Saving Motor) / X (Clutch Motor)
ETC.		-	2X Hook	2X Hook, Binder
Motor		Saving Motor / Clutch Motor	Saving Motor / Clutch Motor	Saving Motor / Clutch Motor
Power		Single phase 220V	Single phase 220V	Single phase 220V

GENERAL SEWING MACHINE

ST-560 / 562 / 572 S E R I E S

FLAT BED 1(2)-NEEDLE UNISON FEED LOCK STITCH SEWING MACHINE
- with AUTOMATIC THREAD TRIMMER



SERIES MODEL CODE

ST - 560 - 7

-	None	-	None-Trimmer
60	1-Needle		
62	2-Needle		
72	2-Needle with auto Trimmer	7	Trimmer Type

DETAILED INFORMATION



Designed for easy one-touch operation of all features from OP BOX.



Increased heavy sewing workability and improved sewing ability through mutual motion of main and secondary presser foot.



Improve sewing accuracy, noise and vibration with Direct Motor.



Up / Down function of pressor foot.



2.5x Hook to increase work productivity with fewer bobbin replacements.

SPECIFICATION

MODEL		ST-560	ST-560-7	ST-562-7	ST-572
Application		Medium Heavy ~ Ultra Heavy Materials			
Stitch Form		Lock stitch 1-needle	Lock stitch 1-needle	Lock stitch 2-needle	Lock stitch 2-needle
Needle		DP x 17 (#14~#25)	DP x 17 (#14~#25)	DP x 17 (#14~#25)	DP x 17 (#14~#25)
Maximum Sewing Speed		1,500 spm	1,500 spm	1,500 spm	1,500 spm
Maximum Stitch length		9.0 mm	9.0 mm	9.0 mm	9.0 mm
Lift of the Presser Foot		16.0 mm	16.0 mm	16.0 mm	16.0 mm
Thread Take-up Stroke		74.5 mm	74.5 mm	74.5 mm	74.5 mm
Needle Bar Stroke		36.0 mm	36.0 mm	36.0 mm	36.0 mm
Hook	Type	Rotary Hook	Rotary Hook	Rotary Hook	Rotary Hook
	Direction	Horizontal	Horizontal	Horizontal	Horizontal
Lubrication System		Automatic-Lubrication	Automatic-Lubrication	Automatic-Lubrication	Automatic-Lubrication
Auto Trimmer		X	O	O	O
Automatic Backtacking		X	O	O	O
Automatic Up Foot Lifter		X	O	O	O
Needle Up-Down		O (Saving Motor) / X (Clutch Motor)	O	O	O (Saving Motor) / X (Clutch Motor)
Feeding Device		Unison feeding	Unison feeding	Unison feeding	Unison feeding
Motor		Saving Motor/Clutch Motor	Direct Motor	Direct Motor	Saving Motor/Clutch Motor
Power		Single phase 220V	Single phase 220V	Single phase 220V	Single phase 220V

ST-340BL-7

FLAT BED 1-NEEDLE UPPER & LOWER FEED LOCK STITCH SEWING MACHINE
- with AUTOMATIC THREAD TRIMMER

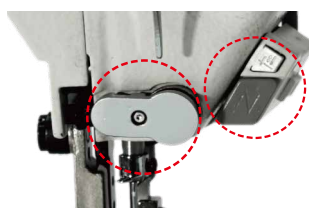


■ MODEL CODE

ST-340 **BL**-7

LARGE HOOK

with AUTOMATIC THREAD TRIMMER



Installed electronic wiper system and increased productivity with automatic backtack function.



Reduce noise and vibration with Direct Motor.



- Simple OP Box built-in.
- Manual back-tack function.

■ SPECIFICATION

MODEL		ST-340BL-7
Application		Medium Heavy ~ Ultra Heavy Materials
Stitch Form		Lock stitch 1-needle
Needle		DP x 5 (#16~#20)
Maximum Sewing Speed		2,500 spm
Maximum Stitch length		9.0 mm
Lift of the Presser Foot	Manual	6.0 mm
	Auto	13.0 mm
Thread Take-up Stroke		67.0 mm
Needle Bar Stroke		35.0 mm
Hook	Type	Rotary Large Hook
	Direction	Horizontal
Lubrication System		Automatic-Lubrication
Auto Trimmer		O
Automatic Backtacking		O
Automatic Up Foot Lifter		X
Needle Up-Down		O
Motor		Direct Motor
Power		Single phase 220V

GENERAL SEWING MACHINE

ST-640BL S E R I E S

LONG ARM TYPE FLAT BED 1-NEEDLE UPPER & LOWER FEED LOCK STITCH SEWING MACHINE
- with AUTOMATIC THREAD TRIMMER



SERIES MODEL CODE

ST-640 **BL**-7

LARGE HOOK

-	None-Trimmer
7	Trimmer Type

DETAILED INFORMATION



Double adjustable pressure on the presser foot.



- Suitable for various sewing conditions, such as step work, by easily adjusting the amount of rise between the main and secondary presser foot with a dial.
- Large Hook 2X.



Manual back-tack function.

SPECIFICATION

MODEL		ST-640BL	ST-640BL-7
Application		Medium Heavy Materials	Medium Heavy Materials
Stitch Form		Lock stitch 1-needle	Lock stitch 1-needle
Needle		DP x 17 (#14~#25)	DP x 17 (#14~#25)
Maximum Sewing Speed		2,000 spm	2,000 spm
Maximum Stitch length		9.0 mm	9.0 mm
Lift of the Presser Foot	Manual	7.0 mm	7.0 mm
	Auto	-	-
Thread Take-up Stroke		67.0 mm	67.0 mm
Needle Bar Stroke		33.8 mm	33.8 mm
Hook	Type	Rotary Hook	Rotary Hook
	Direction	Vertical	Vertical
Lubrication System		Automatic-Lubrication	Automatic-Lubrication
Auto Trimmer		X	O
Automatic Backtacking		X	O
Automatic Up Foot Lifter		X	X
Needle Up-Down		O (Saving Motor) / X (Clutch Motor)	O
Motor		Saving Motor / Clutch Motor	Direct Motor
Power		Single phase 220V	Single phase 220V

ST-757

S E R I E S

FLAT BED 2-NEEDLE NEEDLE FEED LOCK STITCH SEWING MACHINE
- with AUTOMATIC THREAD TRIMMER

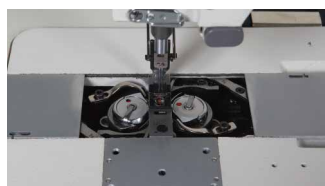


SERIES MODEL CODE

ST-757-7

-	None-Trimmer
7	Trimmer Type

DETAILED INFORMATION



- Thin thread, thick thread is completely trimming, no need to readjust when changing needle spacing.
- Minimum 1.8 mm stitching width gauge available.



Adopt left and right independent control of upper tension to achieve clean sewing.



Improve sewing accuracy, noise and vibration with Direct Motor.



Designed to enable easy one-touch operation of all functions from OP BOX.

SPECIFICATION

MODEL		ST-757	ST-757-7
Application		Medium Heavy Materials	Medium Heavy Materials
Stitch Form		Lock stitch 2-needle	Lock stitch 2-needle
Needle		DP x 5 (#14~#23)	DP x 5 (#14~#23)
Maximum Sewing Speed		3,000 spm	3,000 spm
Maximum Stitch length		5.0 mm	5.0 mm
Lift of the Presser Foot	Manual	7.0 mm	7.0 mm
	Auto	-	15.0 mm
Thread Take-up Stroke		67.0 mm	67.0 mm
Needle Bar Stroke		33.8 mm	33.8 mm
Hook	Type	Rotary Hook	Rotary Hook
	Direction	Horizontal	Horizontal
Lubrication System		Automatic-Lubrication	Automatic-Lubrication
Auto Trimmer		X	O
Automatic Backtacking		X	O
Automatic Up Foot Lifter		X	X
Needle Up-Down		O	O
Motor		Direct Motor	Direct Motor
Power		Single phase 220V	Single phase 220V

GENERAL SEWING MACHINE

ST-797BLD S E R I E S

FLAT BED 2-NEEDLE SPLIT NEEDLE BAR NEEDLE FEED LARGE HOOK LOCK STITCH SEWING MACHINE
- with AUTOMATIC THREAD TRIMMER



SERIES MODEL CODE

ST-797BLD-7

LARGE HOOK

-	None-Trimmer
7	Trimmer Type

DETAILED INFORMATION



SPLIT NEEDLE BAR.



Direct Motor enables noise, vibration reduction and free speed control.



Manual back-tack function.

SPECIFICATION

MODEL		ST-797BLD	ST-797BLD-7
Application		Medium Heavy Materials	Medium Heavy Materials
Stitch Form		Lock stitch 2-needle	Lock stitch 2-needle
Needle		DP x 5 (#14~#23)	DP x 5 (#14~#23)
Maximum Sewing Speed		3,000 spm	3,000 spm
Maximum Stitch length		5.0 mm	5.0 mm
Lift of the Presser Foot	Manual	7.0 mm	7.0 mm
	Auto	-	15.0 mm
Thread Take-up Stroke		67.0 mm	67.0 mm
Needle Bar Stroke		33.8 mm	33.8 mm
Hook	Type	Rotary Hook	Rotary Hook
	Direction	Horizontal	Horizontal
Lubrication System		Automatic-Lubrication	Automatic-Lubrication
Auto Trimmer		X	O
Automatic Backtacking		X	O
Automatic Up Foot Lifter		X	X
Needle Up-Down		O	O
Motor		Direct Motor	Direct Motor
Power		Single phase 220V	Single phase 220V

ZIGZAG SEWING MACHINE

ST-1452/3, 1452D

POST BED 1-NEEDLE LARGE HOOK ZIGZAG LOCK STITCH SEWING MACHINE (2/3 POINT)



SERIES MODEL CODE

ST - 145 **2/3** **D**

2/3	2,3 point (two-way)
D	Direct Type

DETAILED INFORMATION



Hook cover is installed on the front of the machine to increase convenience of bobbin replacement.



- Easy adjustable zigzag width.
- Manual back-tack function..



- Simple OP Box built-in.
 - Reduce noise and vibration with Direct Motor.
- ※ ST-1452-D



Cam replacement makes 2 or 3 points easier to change.
※ ST-1452/3

SPECIFICATION

모델명 MODEL		ST-1452/3	ST-1452D
Application		Medium Heavy Materials	Medium Heavy Materials
Stitch Form		Lock stitch 1-needle	Lock stitch 1-needle
Needle		DP x 5 (#14~#23)	DP x 5 (#14~#23)
Maximum Sewing Speed		2,000 spm	3,000 spm
Maximum Stitch length		8.0 mm	7.0 mm
Maximum Zigzag Width		8.0 mm	8.0 mm
Lift of the Presser Foot		7.0 mm	12.0 mm
Thread Take-up Stroke		67.0 mm	67.0 mm
Needle Bar Stroke		33.8 mm	33.8 mm
Hook	Type	Rotary Hook	Rotary Hook
	Direction	Vertical	Vertical
Lubrication System		Automatic-Lubrication	Automatic-Lubrication
Auto Trimmer		X	X
Automatic Backtacking		X	O
Automatic Up Foot Lifter		X	X
Needle Up-Down		O (Saving Motor) / X (Clutch Motor)	O
Motor		Saving Motor / Clutch Motor	Direct Motor
Power		Single phase 220V	Single phase 220V

ZIGZAG SEWING MACHINE

ST-1530L-DZ S E R I E S

DIRECT DRIVE FLAT BED 1-NEEDLE ZIGZAG SEWING MACHINE



SERIES MODEL CODE

ST-1530L-DZ-7

0	2 point	-	Saving Motor	-	None-Trimmer
3	3 point				
5	2 point Upper & Lower Feed	DZ	Direct Motor	7	Trimmer Type

DETAILED INFORMATION



Direct Motor enables noise, vibration reduction and free speed control.



- Larger by 2 fold-capacity hook installation. Work efficiency has improved by installation.
- This machine is widely used for general purpose sewing as well as for heavy thick materials and nylon thread.
- Automatic-Lubrication system installation.



- Electronic wiper installation.
- Manual back-tack function.
※ ST-1530LDZ-7



Easy operation with OP Panel.

SPECIFICATION

MODEL		ST-1530L-DZ	ST-1530LDZ-7	ST-1533L-DZ	ST-1535
Application		Medium Heavy ~ Ultra Heavy Materials			
Stitch Form		Lock stitch 1-needle	Lock stitch 1-needle	Lock stitch 1-needle	Lock stitch 1-needle
Needle		DP x 17 (#14~#23)	DP x 5 (#16~#21)	DP x 17 (#14~#23)	DP x 17 (#14~#23)
Maximum Sewing Speed		2,000 spm	2,500 spm	2,000 spm	2,000 spm
Maximum Stitch length		10.0 mm	5.0 mm	10.0 mm	10.0 mm
Maximum Zigzag Width		10.0 mm	10.0 mm	10.0 mm	10.0 mm
Lift of the Presser Foot		16.0 mm	13.0 mm	16.0 mm	16.0 mm
Thread Take-up Stroke		74.5 mm	74.5 mm	74.5 mm	74.5 mm
Needle Bar Stroke		36.0 mm	36.0 mm	36.0 mm	36.0 mm
Feed type		Bottom Feed	Bottom Feed	Bottom Feed	Upper & Lower Feed
Hook	Type	Rotary Large Hook	Rotary Large Hook	Rotary Large Hook	Rotary Large Hook
	Direction	Vertical	Vertical	Vertical	Vertical
Lubrication System		Automatic-Lubrication	Automatic-Lubrication	Automatic-Lubrication	Automatic-Lubrication
Auto Trimmer		X	O	X	X
Automatic Backtacking		X	O	X	X
Automatic Up Foot Lifter		X	O	X	X
Needle Up-Down		O	O	O	O (Saving Motor) / X (Clutch Motor)
Motor		Direct Motor	Direct Motor	Direct Motor	Saving Motor/Clutch Motor
Power		Single phase 220V	Single phase 220V	Single phase 220V	Single phase 220V

ST-1530P-7

ELECTRONICALLY CONTROLLED FLAT BED 1-NEEDLE ZIGZAG LOCK STITCH SEWING MACHINE
- with AUTOMATIC THREAD TRIMMER



■ MODEL CODE

ST-1530P-7

with AUTOMATIC THREAD TRIMMER

■ DETAILED INFORMATION



- Electronic wiper installation.
- Manual back-tack function.



Easy operation with OP Panel.



Various functions can be used by clicking icons on the OP Panel, so that all functions are just one-touch away.



- Manual back-tack function.
- Direct Motor enables noise, vibration reduction and free speed control.

■ SPECIFICATION

MODEL		ST-1530P-7
Application		Medium Heavy ~ Ultra Heavy Materials
Stitch Form		Lock stitch 1-needle
Needle		DP x 5 (#16~#21)
Maximum Sewing Speed		2,500 spm
Maximum Stitch length		5.0 mm
Maximum Zigzag Width		9.0 mm
Lift of the Presser Foot	Manual	8.0 mm
	Auto	13.0 mm
Thread Take-up Stroke		74.5 mm
Needle Bar Stroke		36.0 mm
Hook	Type	Rotary Treble Hook
	Direction	Vertical
Lubrication System		Automatic-Lubrication
Auto Trimmer		O
Automatic Backtacking		O
Automatic Up Foot Lifter		O
Needle Up-Down		O
Motor		Direct Motor
Power		Single phase 220V

ZIGZAG SEWING MACHINE

ST-1450

DIRECT DRIVE FLAT BED 1-NEEDLE ZIGZAG SEWING MACHINE - with AUTOMATIC THREAD TRIMMER



■ MODEL CODE

ST - 1450

with Automatic thread trimmer

■ DETAILED INFORMATION



- Innovation in the way of trimming.
- Treble Hook(3X) increases productivity.



- Reduce noise and vibration with Direct Motor.
- Basic adoption of automatic knee lifting devices.



Designed to enable easy one-touch operation of all functions from OP BOX.

■ SPECIFICATION

MODEL		ST-1450
Application		Medium Heavy~Ultra Heavy Materials
Stitch Form		Lock stitch 1-needle
Needle		DP x 17 (#14~#23)
Maximum Sewing Speed		2,000 spm
Maximum Stitch length		5.0 mm
Maximum Zigzag Width		5.0 mm
Lift of the Presser Foot	Manual	10.0 mm
	Auto	10.0 mm
Thread Take-up Stroke		74.5 mm
Needle Bar Stroke		36.0 mm
Hook	Type	Rotary Treble Hook
	Direction	Vertical
Lubrication System		Semi Automatic~Lubrication
Auto Trimmer		O
Automatic Backtacking		O
Automatic Up Foot Lifter		O
Needle Up~Down		O
Motor		Direct Motor
Power		Single phase 220V

ST-2150

S E R I E S

CYLINDER BED 1-NEEDLE UPPER & LOWER FEED ZIGZAG LOCK STITCH SEWING MACHINE

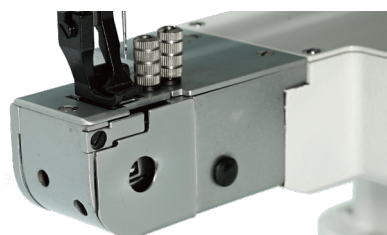


SERIES MODEL CODE

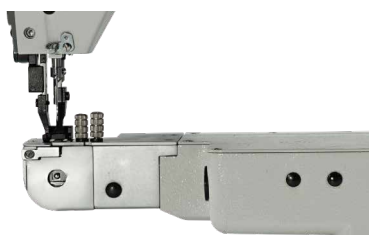
ST-2150 **DZ**

DZ	Direct Motor
M	Saving Motor / Clutch Motor

DETAILED INFORMATION



Upper & Lower Feed.

Cylinder Bed type.
Can be set binder in needle plate
facilitates taping operation.

- Simple OP Box built-in.
- Reduce noise and vibration with Direct Motor.
- ※ ST-2150DZ
- Manual back-tack function.

SPECIFICATION

MODEL		ST-2150DZ	ST-2150M
Application		Medium Heavy~Ultra Heavy Materials	Medium Heavy~Ultra Heavy Materials
Stitch Form		Lock stitch 1-needle	Lock stitch 1-needle
Needle		DP x 17 (#16~#21)	DP x 17 (#14~#23)
Maximum Sewing Speed		2,000 spm	2,000 spm
Maximum Stitch length		5.0 mm	5.0 mm
Maximum Zigzag Width		10.0 mm	5.0 mm
Lift of the Presser Foot	Manual	8.0 mm	10.0 mm
	Auto	13.0 mm	10.0 mm
Thread Take-up Stroke		74.5 mm	74.5 mm
Needle Bar Stroke		36.0 mm	36.0 mm
Hook	Type	Rotary Large Hook	Rotary Large Hook
	Direction	Vertical	Vertical
Lubrication System		Semi Automatic-Lubrication	Semi Automatic-Lubrication
Auto Trimmer		X	X
Automatic Backtacking		X	X
Automatic Up Foot Lifter		X	X
Needle Up-Down		O	O (Saving Motor) / X (Clutch Motor)
Motor		Direct Motor	Saving Motor / Clutch Motor
Power		Single phase 220V	Single phase 220V

ZIGZAG SEWING MACHINE

ST-2530DZ

DIRECT DRIVE FLAT BED 1-NEEDLE UPPER & LOWER FEED ZIGZAG LOCK STITCH SEWING MACHINE (2-POINT)



■ MODEL CODE

ST-2530DZ

Flat bed, Upper & Lower feed

■ DETAILED INFORMATION



Automatic back-tack function.



Easy adjustable zigzag width.



- Simple OP Box built-in.
- Reduce noise and vibration with Direct Motor.
- Manual back-tack function.

MODEL		ST-2530DZ
Application		Medium Heavy~Ultra Heavy Materials
Stitch Form		Lock stitch 1-needle
Needle		DP x 17 (#16~#21)
Maximum Sewing Speed		2,000 spm
Maximum Stitch length		5.0 mm
Maximum Zigzag Width		10.0 mm
Lift of the Presser Foot	Manual	8.0 mm
	Auto	13.0 mm
Thread Take-up Stroke		74.5 mm
Needle Bar Stroke		36.0 mm
Hook	Type	Rotary Treble Hook
	Direction	Vertical
Lubrication System		Automatic-Lubrication
Auto Trimmer		X
Automatic Backtacking		X
Automatic Up Foot Lifter		X
Needle Up-Down		O
Motor		Direct Motor
Power		Single phase 220V

CHAIN STITCH SEWING MACHINE

ST-6800D / 7800-5UTE — S E R I E S

HIGH SPEED DIRECT DRIVE 1(2)-NEEDLE
OVERLOCK CHAIN STITCH SEWING MACHINE



■ SERIES MODEL CODE

ST-6800D-3

3	1-NEEDLE 3-THREAD
4	2-NEEDLE 4-THREAD
5	2-NEEDLE 5-THREAD

ST-7800D-5UTE

2-NEEDLE 5-THREAD
~with Automatic thread trimmer

■ DETAILED INFORMATION



- Direct Motor Mounted.
- Reduced noise and vibration to reduce worker fatigue.
- Troubleshooting belt slip problems that occur during long periods of use.
- Reduced electricity consumption.



1-Needle 3-thread
Overlock.
※ ST-6800D-3



2-Needle 4-thread
Overlock.
※ ST-6800D-4



2-Needle 5-thread
Interlock.
※ ST-6800D-5



2-Needle 5-thread
Interlock with Automatic
Thread Trimmer.
※ ST-7800D-5UTE

■ SPECIFICATION

MODEL	ST-6800D-3	ST-6800D-4	ST-6800D-5	ST-7800-5UTE
Application	Thin~Medium Heavy Materials			
Stitch Form	Overlock Stitch 1-Needle	Overlock Stitch 2-Needle	Interlock Stitch 2-Needle	Interlock Stitch 2-Needle
Needle	DP x 1 (#9~#23)	DP x 1 (#9~#23)	DP x 1 (#9~#23)	DP x 1 (#9~#23)
Maximum Sewing Speed	6,500 spm	6,500 spm	6,500 spm	6,500 spm
Maximum Stitch length	3.8 mm	3.8 mm	3.8 mm	3.8 mm
Lift of the Presser Foot	5.0 mm	5.0 mm	5.5 mm	5.5 mm
Thread Take-up Stroke	67.0 mm	67.0 mm	67.0 mm	67.0 mm
Needle Bar Stroke	33.8 mm	33.8 mm	33.8 mm	33.8 mm
Lubrication System	Automatic-Lubrication	Automatic-Lubrication	Automatic-Lubrication	Automatic-Lubrication
Auto Trimmer	X	X	X	X
Automatic Backtacking	X	X	X	X
Automatic Up Foot Lifter	X	X	X	X
Needle Up-Down	0	0	0	0
Motor	Direct Motor	Direct Motor	Direct Motor	Direct Motor
Power	Single phase 220V	Single phase 220V	Single phase 220V	Single phase 220V

CHAIN STITCH SEWING MACHINE

ST-7500ML S E R I E S

DIRECT DRIVE CYLINDER BED 3(4)-NEEDLE INTERLOCK CHAIN STITCH SEWING MACHINE



SERIES MODEL CODE

ST-7500ML(H)-3

-	4-Needle
3	3-Needle
3S	3-Needle, Small Cylinder
4S	4-Needle, Small Cylinder



Cylinder Bed.
※ ST-7500H
※ ST-7500ML-3



Small Cylinder Bed.
※ ST-7500ML-3S
※ ST-7500ML-4S



Fine tension control device.



Automatic oiling system.



Direct Motor enables noise, vibration reduction and free speed control.

SPECIFICATION

MODEL	ST-7500H	ST-7500ML-3	ST-7500ML-3S	ST-7500ML-4S
Application	Medium Materials			
Stitch Form	Interlock Stitch 4-Needle	Interlock Stitch 3-Needle	Interlock Stitch 3-Needle	Interlock Stitch 4-Needle
Needle	UY x 128 (#9~#23)	UY x 128 (#9~#23)	UY x 128 (#9~#23)	UY x 128 (#9~#23)
Maximum Sewing Speed	5,500 spm	5,500 spm	5,500 spm	5,500 spm
Maximum Stitch length	3.6 mm	3.6 mm	3.6 mm	3.6 mm
Lift of the Presser Foot	7.0 mm	7.0 mm	7.0 mm	7.0 mm
Thread Take-up Stroke	6.0 ~ 6.4 mm	5.6 ~ 6.4 mm	5.4 ~ 6.4 mm	7.0 mm
Needle Bar Stroke	67.0 mm	67.0 mm	67.0 mm	67.0 mm
Needle Bar Stroke	33.8 mm	33.8 mm	33.8 mm	33.8 mm
Lubrication System	Automatic-Lubrication	Automatic-Lubrication	Automatic-Lubrication	Automatic-Lubrication
Auto Trimmer	X	X	X	X
Automatic Backtacking	X	X	X	X
Automatic Up Foot Lifter	X	X	X	X
Needle Up-Down	O	O	O	O
Motor	Direct Motor	Direct Motor	Direct Motor	Direct Motor
Power	Single phase 220V	Single phase 220V	Single phase 220V	Single phase 220V

ST-8500M

S E R I E S

DIRECT DRIVE FLAT BED 3(4)-NEEDLE INTERLOCK CHANIN STITCH SEWING MACHINE



SERIES MODEL CODE

ST-8500M-3

-	4-Needle
3	3-Needle



4-Needle.
※ ST-8500M



3-Needle.
※ ST-8500M-3



Improved sewing quality by increasing convenience of tension control devices.



- Direct Motor enables noise, vibration reduction and free speed control.
- Increase productivity by allowing users to adjust up and down the needle bar.

SPECIFICATION

MODEL	ST-8500M	ST-8500M-3
Application	Medium Materials	
Stitch Form	Interlock Stitch 4-Needle	Interlock Stitch 3-Needle
Needle	UY x 128 (#9~#23)	UY x 128 (#9~#23)
Maximum Sewing Speed	5,000 spm	5,000 spm
Maximum Stitch length	3.6 mm	3.6 mm
Lift of the Presser Foot	7.0 mm	7.0 mm
Istance between Needles	6.0 ~ 6.4 mm	6.0 ~ 6.4 mm
Thread Take-up Stroke	67.0 mm	67.0 mm
Needle Bar Stroke	33.8 mm	33.8 mm
Lubrication System	Automatic-Lubrication	Automatic-Lubrication
Auto Trimmer	X	X
Automatic Backtacking	X	X
Automatic Up Foot Lifter	X	X
Needle Up-Down	O	O
Motor	Direct Motor	Direct Motor
Power	Single phase 220V	Single phase 220V

OTHER SEWING MACHINE

ST-168 S E R I E S

1-NEEDLE, DOUBLE THREAD LOCK STITCH SIDE-SHOE SEWING MACHINE (Chain Structure Driving)



■ SERIES MODEL CODE

ST-168 S

S	Small Hook
M	Middle Hook

■ DETAILED INFORMATION



- The adoption of long arms enables various forms of free sewing such as boots, shoes, sneakers, etc.
- Long arm's front-to-back movement facilitates large workplaces.



Maintaining a balance optimized by hooks in the form of 90 degrees angles.



LED Lamp.

■ SPECIFICATION

MODEL		ST-168S	ST-168M
Application		Heavy Materials	Heavy Materials
Stitch Form		Lock Stitch 1-Needle	Lock Stitch 1-Needle
Needle		CP x 5 (#18~#25)	CP x 5 (#18~#25)
Maximum Sewing Speed		800 spm	800 spm
Maximum Stitch length		12.0 mm	12.0 mm
Lift of the Presser Foot		7.0 mm	7.0 mm
Thread Take-up Stroke		67.0 mm	67.0 mm
Needle Bar Stroke		33.8 mm	33.8 mm
Hook	Type	Rotary Small Hook	Rotary Small Hook
	Direction	Vertical	Vertical
Lubrication System		Automatic-Lubrication	Automatic-Lubrication
Auto Trimmer		X	X
Automatic Backtacking		X	X
Automatic Up Foot Lifter		O	O
Needle Up-Down		O	O
Motor		Servo Motor	Servo Motor
Power		Single phase 220V	Single phase 220V

ST-168TTZZ

2-NEEDLE, DOUBLE THREAD LOCK STITCH SEATED TYPE SHOE-BORDER SEWING MACHINE
- with STRAIGHT HORN



■ MODEL CODE

ST-168TTZZ

STRAIGHT HORN

■ DETAILED INFORMATION



The adoption of cylinder bed enables free sewing of various forms including boots, shoes, and sneakers.



LED Lamp.



2-Needle.

■ SPECIFICATION

MODEL		ST-168TTZZ
Application		Heavy Materials
Stitch Form		Lock Stitch 2-Needle
Needle		CP x 5 (#18~#25)
Maximum Sewing Speed		800 spm
Maximum Stitch length		12.0 mm
Lift of the Presser Foot		7.0 mm
Thread Take-up Stroke		67.0 mm
Needle Bar Stroke		33.8 mm
Hook	Type	Rotary Small Hook
	Direction	Vertical
Lubrication System		Automatic-Lubrication
Auto Trimmer		X
Automatic Backtacking		X
Automatic Up Foot Lifter		0
Needle Up-Down		0
Motor		Servo Motor
Power		Single phase 220V

OTHER SEWING MACHINE

ST-169 S E R I E S

1-NEEDLE, DOUBLE THREAD LOCK STITCH SEATED TYPE SHOE-BORDER STITCHER
- with CHIANLESS DRIVING 0x HORN



■ SERIES MODEL CODE

ST - 169 **S**

S	Small Hook
M	Middle Hook
L	Large Hook

■ DETAILED INFORMATION



- The adoption of long arms enables various forms of free sewing such as boots, shoes, sneakers, etc.
- Long arm's front-to-back movement facilitates large workplaces.



Maintaining a balance optimized by hooks in the form of 90 degrees angles.



LED Lamp.

■ SPECIFICATION

MODEL		ST-169S	ST-169M	ST-169L
Application		Heavy Materials	Heavy Materials	Heavy Materials
Stitch Form		Lock Stitch 1-Needle	Lock Stitch 1-Needle	Lock Stitch 1-Needle
Needle		CP x 5 (#18~#25)	CP x 5 (#18~#25)	CP x 5 (#18~#25)
Maximum Sewing Speed		800 spm	800 spm	800 spm
Maximum Stitch length		12.0 mm	12.0 mm	12.0 mm
Lift of the Presser Foot		7.0 mm	7.0 mm	7.0 mm
Thread Take-up Stroke		67.0 mm	67.0 mm	67.0 mm
Needle Bar Stroke		33.8 mm	33.8 mm	33.8 mm
Hook	Type	Rotary Small Hook	Rotary Middle Hook	Rotary Large Hook
	Direction	Vertical	Vertical	Vertical
Lubrication System		Automatic-Lubrication	Automatic-Lubrication	Automatic-Lubrication
Auto Trimmer		X	X	X
Automatic Backtacking		X	X	X
Automatic Up Foot Lifter		O	O	O
Needle Up-Down		O	O	O
Motor		Servo Motor	Servo Motor	Servo Motor
Power		Single phase 220V	Single phase 220V	Single phase 220V

ST-269

S E R I E S

1-NEEDLE, DOUBLE THREAD LOCK STITCH SEATED TYPE SHOE-BORDER STITCHER



■ SERIES MODEL CODE

ST - 269 **S**

S	Small Hook
M	Middle Hook
L	Large Hook

■ DETAILED INFORMATION



- Arm designed at a 45-degree angle to implement various sewing stitching such as sneakers, handmade shoes, etc.
- Easy to move front and back the arm and has excellent durability.



Maintaining a balance optimized by hooks in the form of 45-degree angles.



LED Lamp.

■ SPECIFICATION

MODEL		ST-269S	ST-269M	ST-269L
Application		Heavy Materials	Heavy Materials	Heavy Materials
Stitch Form		Lock Stitch 1-Needle	Lock Stitch 1-Needle	Lock Stitch 1-Needle
Needle		CP x 5 (#18~#25)	CP x 5 (#18~#25)	CP x 5 (#18~#25)
Maximum Sewing Speed		800 spm	800 spm	800 spm
Maximum Stitch length		12.0 mm	12.0 mm	12.0 mm
Lift of the Presser Foot		7.0 mm	7.0 mm	7.0 mm
Thread Take-up Stroke		67.0 mm	67.0 mm	67.0 mm
Needle Bar Stroke		33.8 mm	33.8 mm	33.8 mm
Hook	Type	Rotary Small Hook	Rotary Middle Hook	Rotary Large Hook
	Direction	Vertical	Vertical	Vertical
Lubrication System		Automatic-Lubrication	Automatic-Lubrication	Automatic-Lubrication
Auto Trimmer		X	X	X
Automatic Backtacking		X	X	X
Automatic Up Foot Lifter		O	O	O
Needle Up-Down		O	O	O
Motor		Servo Motor	Servo Motor	Servo Motor
Power		Single phase 220V	Single phase 220V	Single phase 220V

OTHER SEWING MACHINE

ST-2972 S E R I E S

SHOE REPAIR MACHINE



■ SERIES MODEL CODE

ST - 2972

For repair

■ DETAILED INFORMATION



- Maximize work efficiency with rotary presserfoot.
- Suitable for round-work.



Manual wheel mounting facilitates sewing corrections.

■ SPECIFICATION

MODEL		ST-2972
Application		Heavy Materials
Stitch Form		Lock Stitch 1-Needle
Needle		DP x 17 (#14~#23)
Maximum Sewing Speed		500 spm
Maximum Stitch length		5.0 mm
Lift of the Presser Foot		9.0 mm
Thread Take-up Stroke		67.0 mm
Needle Bar Stroke		33.8 mm
Hook	Type	Rotary Hook
	Direction	Vertical
Lubrication System		Automatic-Lubrication
Auto Trimmer		X
Automatic Backtacking		X
Automatic Up Foot Lifter		X
Needle Up-Down		O
Motor		Saving Motor
Power		Single phase 220V

ST-6003D

S E R I E S

DIRECT DRIVE SINGLE THREAD OVERSEAMING MACHINE FOR INSOLING

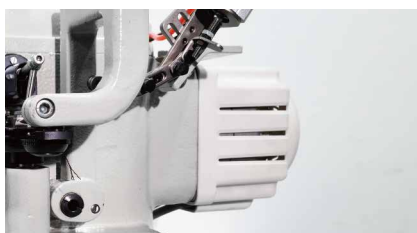


■ SERIES MODEL CODE

ST-6003D-7

-	None Trimmer
7	Trimmer Type

■ DETAILED INFORMATION



Decrease noise and vibration by installing Direct Motor.



Automatic Thread Trimmer.
※ ST-6003D-7

■ SPECIFICATION

MODEL		ST-6003D	ST-6003D-7
Application		Heavy Materials	Heavy Materials
Stitch Form		1-Needle	1-Needle
Needle		DP x 17 (#19~#22)	DP x 17 (#19~#22)
Maximum Sewing Speed		1,600 spm	1,600 spm
Maximum Stitch length		6.0 mm	6.0 mm
Maximum Sewing thickness		6.0 mm	8.0 mm
Maximum Sewing width		5.0 mm	7.0 mm
Lift of the Presser Foot		7.0 mm	7.0 mm
Thread Take-up Stroke		67.0 mm	67.0 mm
Needle Bar Stroke		33.8 mm	33.8 mm
Hook	Type	Rotary Hook	Rotary Hook
	Direction	Vertical	Vertical
Lubrication System		Automatic-Lubrication	Automatic-Lubrication
Auto Trimmer		X	O
Automatic Backtacking		X	X
Automatic Up Foot Lifter		X	O
Needle Up-Down		O	O
Motor		Direct Motor	Direct Motor
Power		Single phase 220V	Single phase 220V

SPRAY MACHINE

ST-296 / 298 S E R I E S

FULLY AUTOMATIC HOT-CEMENT SEPARATING SIDES
& POUNDING MACHINE & EDGE FOLDING MACHINE



■ SERIES MODEL CODE

ST - 296

6	Auto-Cementing, Separating Sides & Pounding
8	Fully Automatic Hot-Cement Edge Folding

■ DETAILED INFORMATION



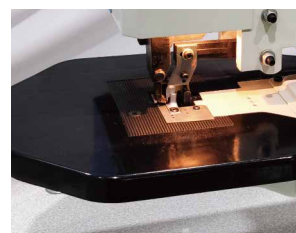
※ ST-296
Double folding function.



※ ST-296
Optimization with hot
melt automatic injection.



※ ST-298
Maximize work efficiency
with servo motor control.



※ ST-298
3 to 8 mm folding is possible.
Adjustable temperature and
flow amount of thermal
adhesive with rotary button.

■ SPECIFICATION

MODEL	ST-296	ST-298
Measurement (L) x (W) x (H)	1200 X 550 X 1250 (mm)	1200 X 550 X 1200 (mm)
Weight	135 Kg	113 Kg
Motor Power	0.65 Kw	0.65 Kw
Power	Single phase 220V	Single phase 220V

ST-601 / 603

S E R I E S

HOT MELT GLUE SPRAY MACHINE & HOT MELT GLUE ROLLER MACHINE



SERIES MODEL CODE

ST - 601

1	Spray type & Capacity 5L
3	Roller type & Capacity 3L

DETAILED INFORMATION



※ ST-601
Expect efficient space placement and task optimization with double-head type.



※ ST-603
Adjustable application range depending on work piece Roller size 30-300 mm, adjustable roller speed.



Spray function allows use on all parts of the shoe, inside, back, etc.



Built-in Digital Temperature control.

SPECIFICATION

MODEL	ST-601	ST-603
Capacity	5L	3L
Maximum Melting Rate of Bond	7 Kg / Hour	2.5 Kg / Hour
Maximum Operative Temperature	220 °C	220 °C
Maximum Viscosity / Concentration	12,000 CPC	20,000 CPC
Measurement (L) x (W) x (H)	747 X 400 X 740 (mm)	500 X 400 X 910 (mm)
Weight	45 Kg	65 Kg
Power	Single phase 220V	Single phase 220V

CUTTING MACHINE

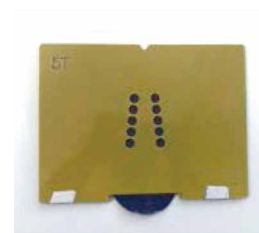
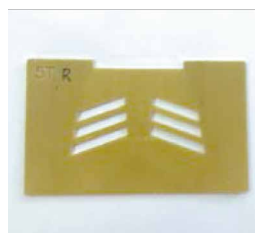
AP-1212Y CNC CUTTING MACHINE



■ DETAILED INFORMATION



- Optimized for pallet fabrication of backlite.
- Dual screws, dual motors and dual drives for Y-axis transport to secure transport safety.
- Square Linear Guide for X, Y, and Z axes adopted.



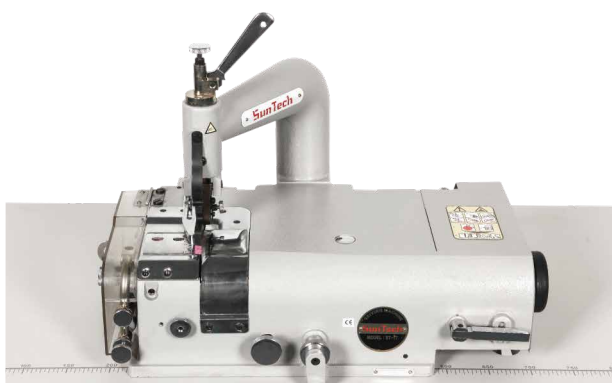
Multiple forms of PALLET can be produced.

■ SPECIFICATION

MODEL	AP-1212Y
Precision repeatability	±0.02mm
Spindle	2,200 W
Spindle Rate	24,000 RPM
Cutting Tool Diameter	3.175 / 6 mm
Maximum Movement Speed	7.2 m / min
Max Working Size (L) x (W) x (H)	1200 x 1200 x 110 (mm)
Measurement (L) x (W) x (H)	2100 x 1910 x 1460 (mm)
Weight	660 Kg
Consumption	3.0 KW
Power	Single phase 220V

ST-77

SKIVING MACHINE



■ DETAILED INFORMATION



- Available for sneakers, wallets, belts, bags, shoes, rubber and high-end leather edges.
- Flat skiving maximum width 50 mm at a time.



Attaching protective devices on knife-driven areas prevents safety accidents of workers.



- Easy-to-use skiving knife polishing clutch lever fitted.
- Easy to adjust the distance between the transfer roller and the skiving knife.

■ SPECIFICATION

MODEL	ST-77
Maximum sewing speed	1200 spm
Motor Power	400W Clutch Motor
Measurement (L) x (W) x (H)	530 x 340 x 370 (mm)
Weight	37 Kg
Power	Single phase 220V

CUTTING MACHINE

ST-266

DIGITAL SKIVING MACHINE



■ DETAILED INFORMATION



- Digitalization of Skiving.
- Store the width, thickness, and angle of the skiving work piece and can be used for future work on the same product.
- Save 99 skiving designs.



Servo motor control system.

■ SPECIFICATION

MODEL	ST-266
Measurement (L) x (W) x (H)	1200 x 550 x 1160 (mm)
Weight	135 Kg
Motor Power	1.35 KW
Power	Single phase 220V

ST-866U

AUTO ULTRASONIC FOLDING & CUTTING MACHINE



■ DETAILED INFORMATION



7-inch easy-to-manipulate touch screen Panel basic for easy setup and editing.



Install protective covers on cutting parts for safe operation.



Length can be adjusted by 0.1mm and can be worked up to 60mm.



4 pieces of work can be worked simultaneously. (folding / ultrasonic joining / cutting).

■ SPECIFICATION

MODEL	ST-866U
Frequency	20 Khz
Cutting Speed	200 pcs / 1 Min (30mm)
Cutting Size	1 ~ 60 mm
Air Pressure	0.5~0.6 Map
Measurement (L) x (W) x (H)	1200 x 740 x 1160 (mm)
Weight	120 Kg
Power	Single phase 220V

CUTTING MACHINE

TW-588 S E R I E S

TRAVELING HEAD CUTTING MACHINE



INNOVATIVE SYSTEM FOR MANUAL CUTTING OF LEATHER AND SYNTHETIC MATERIALS



Higher productivity, easiness of use, low energy consumption, full safety for operators. Patented technology minimizes the need of maintenance, offering maximum reliability and high value over time.

■ USE AND CHARACTERISTICS

- Buttons controlling (time interlock synchronization during cutting phase) to ensure operator safety.
- Stable trolley moving speed.
- Continuous high cutting power.
- Lower energy consumption.
- High stability, no special maintenance required.
- Data transmission for IoT system is possible.

■ SPECIFICATION

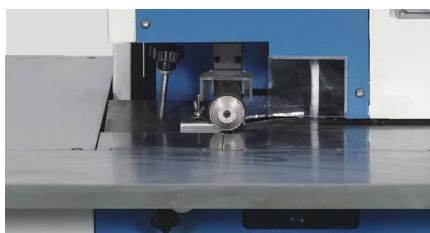
MODEL	TW-588/3	TW-588/40
Tons	25 T	40 T
Working Area	1700 x 500 (mm)	1600 x 650 (mm)
Head Size	490 x 490 (mm)	650 x 650 (mm)
Hydraulic Horsepower	2.2 KW	4 KW
Oil Pump	32 displacement	25 displacement
Oil Cylinder	Spring Cylinder	Spring Cylinder
Motor	AC Servo Motor 1 KW	AC Servo Motor 1 KW
Measurement (L) x (W) x (H)	2250 x 1000 x 2180 (mm)	2160 x 1400 x 2100 (mm)
Weight	1650 Kg	2150 Kg
Power	Three phase 380V	Three phase 380V

TYL-966A

FORM SKIVING MACHINE



■ DETAILED INFORMATION



Cutable thickness from 5mm to 20mm.



Precise thickness control possible.



Suitable for use with sponge edges.

■ SPECIFICATION

MODEL	TYL-966A
Power Consumption	0.5 KW
Measurement (L) x (W) x (H)	660 x 360 x 1100 (mm)
Weight	75 Kg
Power	Single phase 220V

EMBROIDERY MACHINE

SF / SFT S E R I E S

Computerized Multi-head Embroidery Machine



■ DETAILED INFORMATION



Precision & High Quality.

- Customized motion profiles and servo control applied motion controls.
- High-level embroidery quality through precise control even in high-speed conditions.
- Apply special functions to improve quality (e.g., zigzag automatic tension adjustment) 15 inch full touch LCD-based user-friendly OP Box Equipped with a variety of I/O ports and multi-tasking capabilities.
- Convenience provided through remote control functions



High Speed & Productivity.

- The speed of the embroidery is important to harmonize the instrument with the control system.
- Application of motion profiles and high-speed CPUs according to the characteristics of the instruments.
- Increase productivity with high-speed embroidery.
- Troubleshooting unstable voltage in the factory and electrical noise in the equipment Equipped with Voltage monitoring function, separate production of Power part and Control part.
- Stable equipment operations

■ DETAILS OF SPECIFICATION

- Computer controlled by Korea (1,200 RPM Model)
- X,Y Drive and electric system by Korea (1,200 RPM Model)
- Timing Belt with linear guide rail by Germany
- Computer controlled by Korea (1,200 RPM Model)
- Nemicon Encoder by Japan
- Hirose Rotary Hook by Japan
- Towa Bobbin Case by Japan
- Main, X/Y Servo Motor
- Trimming Controlled by Stepping Motor

SF / SFT

S E R I E S

Computerized Multi-head Embroidery Machine

SPECIFICATION

SF Series (High speed)

Suntech's flagship model boasts a 1200 spm high driving speed. The combination of the fast-acting instrument and control parts determines the performance and quality of the product. 1 to 20 heads based on 6 or 9 colors.

MODEL	Needles	Heads	Working(Emb.) Area	Maximum RPM	Hook	Weight(Kg)	Measurement (L) x (W) x (H)
SF-901	9	1	330 X 590(X*Y)	1,200 RPM	1X or 1.6X Rotary hook	850	1.5 x 1.8 x 1.6 (m)
SF-906		6				1,500	3.2 x 1.8 x 1.6 (m)
SF-920		20				4,300	7.8 x 1.8 x 1.6 (m)
SF-1201	12	1				880	1.5 x 1.8 x 1.6 (m)
SF-1206		6				1,550	3.2 x 1.8 x 1.6 (m)
SF-1220		20				4,400	7.8 x 1.8 x 1.6 (m)

Special Series of Embroidery Machine

High Speed of Performance Flat (1,200 spm) + Taping (850 spm) 15 " Touch Panel,
Multilingual support for easy operation, stable movement by all servo system.
Zigzag or code stitching of multi-function.

MODEL	Needles	Heads	Working(Emb.) Area	Maximum RPM	Hook	Weight(Kg)	Measurement (L) x (W) x (H)
SFT-10606	1+6	6	400 X 590 (X*Y)	1,200 / 850 (Flat / Cording)	1X or 1.6 Rotary hook	2,000	4.3 x 1.8 x 1.6 (m)
SFT-10610		10				3,000	5.9 x 1.8 x 1.6 (m)
SFT-10616		16				4,800	8.4 x 1.8 x 1.6 (m)



KOREA

HQ

85, Goha-gil, Eonyang-eup, Uljugun,
Ulsan, Republic of Korea
TEL +82-55-352-9304

R&D CENTER / FACTORY

394-5, Sanoe-ro, Sanoe-myeon,
Miryang-si, Gyeongsangnam-do,
Republic of Korea
TEL +82-55-352-9304

TRADING CENTER

20-1, Jaseonggongwon-ro, Donggu,
Busan, Republic of Korea
TEL +82-51-632-9304

INDONESIA

CIKARANG OFFICE

Ruko Podium Blok A No.1&2 JL. Mataram
Lippo Cikarang Kel. Cibatu Kec. Cikarang
Selatan, Bekasi 17550, Indonesia
TEL +62-21-2210-4936~7
H.P +62-811-911-2248
H.P +62-811-911-2284 (Local)

JEPARA OFFICE

JL. Jepara - Kudus Desa Rengging
RT.006 RW.001 Pecangaan
Jepara, Indonesia.
TEL +62-291-752-0288
H.P +62-811-179-2248

REMBANG OFFICE

JL. Panglima Sudirman No.158-6
RT.002 RW.03, Kabonganlor, Rembang,
Jawa Tengah, Indonesia.
TEL +62-295-698-3799

VIETNAM

HANOI OFFICE

So 76-LK 6B, Lang Viet Kieu Ch au Au,
Phuong Mo Lao, Quan Ha dong,
Thanh pho HaNoi, Vietnam.
TEL +84-24-3991-9222
H.P +84-91-494-8802

HOCHIMINH OFFICE

53 lo N, Hoang Quoc Viet Noi Dai, Khu
dan cu Phu My, Phuong Phu My, Quan 7,
Thanh pho Ho Chi Minh, Vietnam.
TEL +84-28-6682-8877
H.P +84-97-932-8610